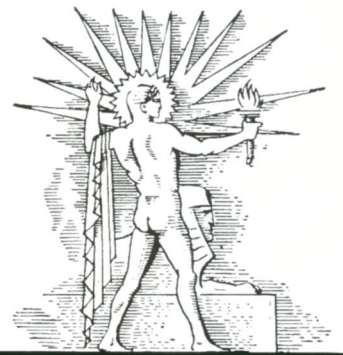


PRICE  
15¢

# SCIENCE NEWS LETTER

THE WEEKLY SUMMARY OF CURRENT SCIENCE •



July 26, 1941

Smashing Through

See Page 51

A S C I E N C E S E R V I C E P U B L I C A T I O N

# Do You Know?

*Butterwort* leaves contain a vegetable rennet that Laplanders find useful in curdling reindeer milk.

Switzerland depends on imports for about one-fourth of its *food*, and is particularly dependent for wheat, sugar, and feed grains.

*Industrial accidents* last year cost American industry one and one-half billion man-hours of production, or enough labor to build 15,000 bombers.

Many oddly bent and distorted old *trees* are relics of Indian days, when woodland tribes bent and fastened saplings as trail guideposts.

*Home builders* can help national defense, says the Bureau of Mines, if they will see that houses are properly insulated, thereby saving fuel.

Practising *soil conservation*, Pueblo Indians of the Southwest have for centuries raised corn and vegetables in a land of uncertain and scant rain.

Since *butadiene*, a combustible gas, is used in one process for manufacturing synthetic rubber, the Bureau of Mines has published results of tests to show industry the need for care in its use.

Tourists to Washington are warned against taking home the pretty *water chestnut* in the Potomac to grow at home—the plant which now clogs the Potomac grows fast and wipes out other plants in a stream.

## QUESTIONS DISCUSSED IN THIS ISSUE

*Most articles which appear in SCIENCE NEWS LETTER are based on communications to Science Service, or on papers before meetings. Where published sources are used they are referred to in the article.*

**AGRICULTURE**  
What is tear gas good for? p. 56.

**ARCHAEOLOGY**  
Where did a wooden building stand for more than a thousand years? p. 57.

**ASTRONOMY**  
What is the brightest star in the summer skies? p. 58.

**ASTRONOMY—RADIO**  
Why do astronomers look for a possible disruption of radio and telegraphic communication near the end of July? p. 56.

**BOTANY**  
What is the explanation of the blue nuclei in flower petal cells? p. 56.

**CHEMISTRY**  
What is likely to be the purpose behind the new mystery explosive plant? p. 53.

**ICHTHYOLOGY**  
How large is a small whale-shark? p. 54.

**MEDICINE**  
How is migraine related to epilepsy? p. 53.  
What is contained in an emergency kit for babies born during a blitz? p. 57.  
What is the new record low death rate from appendicitis? p. 55.

**METALLURGY**  
How is the microscope used in connection with X-rays for study of metals? p. 62.

**METEOROLOGY—ECOLOGY**  
What are the difficulties of measuring rain? p. 62.

**MILITARY SCIENCE**  
How does the armament of British heavy tanks compare with ours? p. 57.

**NUTRITION**  
What two reasons prevent the wide use of whole wheat bread? p. 55.  
What vitamins are issued to U. S. soldiers in the far North? p. 56.

**PALEONTOLOGY**  
How can you get a dinosaur bone? p. 54.  
Why are stones found in the stomachs of crocodiles? p. 60.

**PHYSIOLOGY**  
What discovery may throw light on the problems of crippling paralysis? p. 60.

**PSYCHOLOGY—MEDICINE**  
Where is a search being made for a drug which will counteract the effects of altitude on flyers? p. 56.

**PUBLIC HEALTH**  
What disease may develop into the great plague of the present world war? p. 51.  
Why is a program of physical rehabilitation of young men necessary? p. 59.

**RADIO—AERONAUTICS**  
What new application is made of FM radio? p. 52.

**RESOURCES**  
Where do sandbags come from? p. 59.

Audubon tried bird *banding* in 1803, marking young phoebes with a silver thread around the leg.

The *horn* of one white rhinoceros killed in South Africa was five feet two and one-fourth inches long.

In dried form prepared for export, 360 *eggs* amount to only about 10 pounds.

*Soybean hay* is pronounced good for dairy cows, and most of them like it.

About 80% of *grade crossing* accidents involve motorists who live in the neighborhood.

As part of the WPA adult education program in New York, a course in taking shorthand dictation in *medical terminology* is meeting a defense-time need.

## SCIENCE NEWS LETTER

Vol. 40 JULY 26, 1941 No. 4

The Weekly Summary of Current Science, published every Saturday by SCIENCE SERVICE, Inc., 2101 Constitution Avenue, Washington, D. C. Edited by WATSON DAVIS.

Subscriptions—\$5.00 a year; two years, \$7.00; 15 cents a copy. Ten or more copies to same address, 5 cents a copy. Back numbers more than six months old, 25 cents.

In requesting change of address, please give your old address as well as the new one, at least two weeks before change is to become effective.

Copyright, 1941, by Science Service, Inc. Reproduction of any portion of SCIENCE NEWS LETTER is strictly prohibited. Newspapers, magazines and other publications are invited to avail themselves of the numerous syndicate services issued by Science Service.

Cable address: Scienservc, Washington.

Entered as second class matter at the post-

office at Washington, D. C., under the Act of March 3, 1879. Established in mimeographed form March 18, 1922. Title registered as trademark, U. S. and Canadian Patent Offices. Indexed in Readers' Guide to Periodical Literature, Abridged Guide, and in the Engineering Index.

Members of the American Association for the Advancement of Science have privilege of subscribing to SCIENCE NEWS LETTER, at \$3 a year.

The New York Museum of Science and Industry has elected SCIENCE NEWS LETTER as its official publication to be received by its members.

Advertising rates on application. Member Audit Bureau of Circulation.

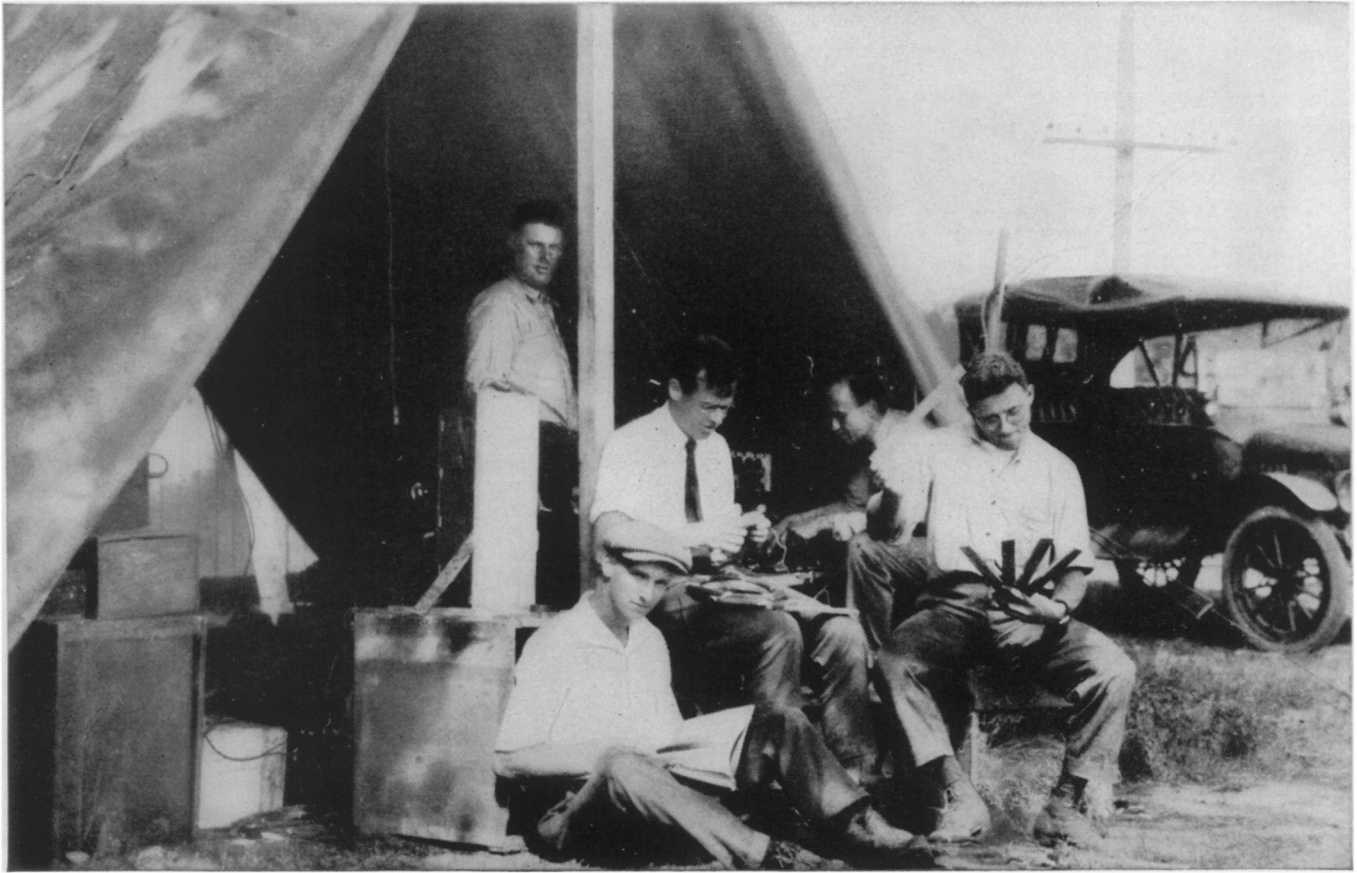
SCIENCE SERVICE is the Institution for the Popularization of Science organized 1921 as a non-profit corporation.

*Board of Trustees—Nominated by the American Association for the Advancement of Science:* Henry B. Ward, University of Illinois; Edwin G. Conklin, American Philosophical Society; J. McKeen Cattell, Editor, Science. *Nominated by the National Academy of Sciences:* R. A. Millikan, California Institute of Technology; Harlow

Shapley, Harvard College Observatory; William H. Howell, Johns Hopkins University. *Nominated by the National Research Council:* Ross G. Harrison, Yale University; C. G. Abbot, Secretary, Smithsonian Institution; Harrison E. Howe, Editor, Industrial and Engineering Chemistry. *Nominated by the Journalistic Profession:* O. W. Riegel, Washington and Lee School of Journalism; A. H. Kirchhofer, Buffalo Evening News; Neil H. Swanson, Baltimore Evening Sun. *Nominated by the E. W. Scripps Estate:* Frank R. Ford, Evansville Press; Warren S. Thompson, Miami University, Oxford, Ohio; Harry L. Smithton, Cincinnati, Ohio.

*Officers—Honorary President:* William E. Ritter, President; Edwin G. Conklin, Vice-President and Chairman of Executive Committee; Harlow Shapley, Treasurer; O. W. Riegel, Secretary; Watson Davis.

*Staff—Director:* Watson Davis. *Writers:* Frank Thone, Emily C. Davis, Jane Stafford, Marjorie Van de Water, James Stokley. *Photography:* Fremont Davis. *Librarian:* Minna Gill. *Business Manager:* Alvin C. Stewart. *Sales and Advertising:* Hallie Jenkins, Austin Winant. *Correspondents* in principal cities and centers of research.



## ***It all started in a tent...***

AGAINST the horizon of "the spires of Princeton," the world's largest radio research laboratories are to be built by the Radio Corporation of America at Princeton, New Jersey.

The new RCA Laboratories, to be completed before the year-end, are planned to promote the growth of radio as an art and industry, and to meet the expanding demands of national defense. Several

hundred research experts and engineers will coordinate their efforts to create new products and services, and improve existing ones, in all fields of radio and electronics.

The march of progress which has led to Princeton started back in 1919 when the first RCA laboratory was located in a tent, later to be augmented by a shack 15 feet square at Riverhead, L. I. From

that humble beginning, with public service as the watchword, RCA has pioneered in radio manufacturing, international communications, marine radio, broadcasting, sound reproduction and television. Through continuous research it has discovered keys that have unlocked new doors of radio science, and has extended the usefulness of radio into many realms of public service.

Now, RCA research experts on a united front at Princeton are to take another historic step to enhance America's preeminence in radio, and to increase the services of radio to the Government, to the people of the United States and to industry.



## **RCA LABORATORIES**

A SERVICE OF RADIO CORPORATION OF AMERICA  
Radio City, New York

RCA Manufacturing Co., Inc. • Radiomarine Corporation of America  
RCA Laboratories • National Broadcasting Company, Inc.  
R.C.A. Communications, Inc. • RCA Institutes, Inc.