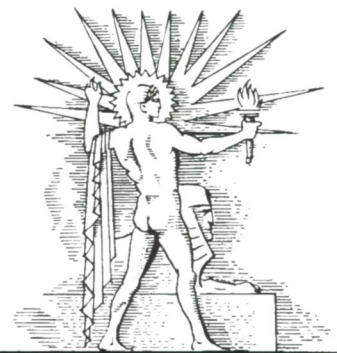
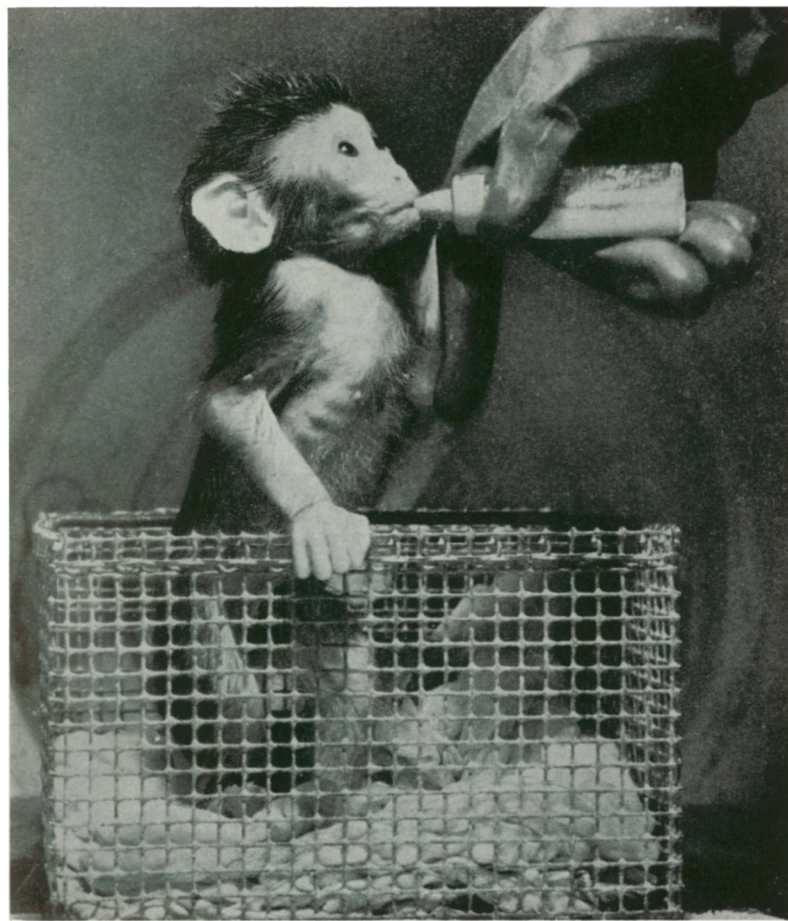


PRICE
15¢

SCIENCE NEWS LETTER

THE WEEKLY SUMMARY OF CURRENT SCIENCE ●



October 18, 1941

Germ Free

See Page 250

A S C I E N C E S E R V I C E P U B L I C A T I O N

Do You Know?

Women are much less liable to *bomb shock* than are men.

Igloos to the U. S. Army are storage warehouses for explosives.

Prior to World War One, Germany made three-fourths of the world's *dyes*.

More than 70,000 trained *research specialists* are employed by 2,300 companies in the United States.

Oils that yield *flower scent* are usually on the upper surface of petals or sepals, in the epidermal cells.

England was invaded this summer from the continent — by an unusual flight of clouded yellow *butterflies*.

Infra-red rays kill *cockroaches*, but no handy method of using this method in the home is foreseen, says one agriculturist.

A *fly swatting squad* is important to the British Army in the Western Desert, where a million flies were trapped and burned in six weeks.

Old *Indians* of Minnesota say that many fierce battles were fought in the past between Chippewas and Sioux for possession of wild rice beds.

The complex melting pot of peoples in the *Russian Caucasus* includes some descendants of medieval Crusaders who stayed there when on their way to Jerusalem.

QUESTIONS DISCUSSED IN THIS ISSUE

Most articles which appear in SCIENCE NEWS LETTER are based on communications to Science Service, or on papers before meetings. Where published sources are used they are referred to in the article.

AGRICULTURE

Where do white blackberries grow? p. 244.

ANTHROPOLOGY

What is the source of your gestures? p. 243.

ASTRONOMY

What star is two millions miles away from its companion? p. 252.

BIOLOGY

Where does there live a germ-free monkey? p. 250.

CHEMISTRY

How can mottled enamel of teeth be prevented at home? p. 251.

ECONOMICS

How much does an American spend on his car? p. 249.

ENGINEERING

Which of the motorist's jobs can be taken over by a mechanical brain in future? p. 247.

ENGINEERING—PSYCHOLOGY

In what ways are mentally ill drivers hazards on the road? p. 244.

Why are defense workers chained to their machines? p. 244.

EPIDEMIOLOGY

In what new crime has the mosquito been implicated. p. 245.

MEDICINE

What new treatment has been found for bone cancer? p. 243.

What operation can cure "blue babies"? p. 246.

MEDICINE—GENETICS

To what disease is a predisposition inherited? p. 254.

METALLURGY

What will the steel shortage amount to next year? p. 251.

NUTRITION

What is the square meal rule? p. 246.

PALEONTOLOGY

How old are the footprints of extinct rhinoceros found in Wyoming? p. 245.

PHYSICS

What new job has been found for the electron microscope? p. 248.

PHYSIOLOGY

By what test can you measure exactly your alcohol capacity? p. 246.

POPULATION

How is England losing many of her babies? p. 248.

PSYCHOLOGY

How have cats learned to work together? p. 249.

PUBLIC HEALTH

What causes "starvation dropsy" and watery swelling in pregnancy? p. 247.

ZOOLOGY

What is the most successful mammal? p. 248.

Dust on Army trucks is found to increase *camouflage* effectiveness of the dull olive drab paint—shiny surfaces reflect light.

Both wheat and barley were grown in *India* about 3000 B.C., since these grains have been found in city ruins of that age.

Homing pigeons can carry for the Army larger loads than tissue paper notes around the bird's leg—photographs and documents can be attached at the breast.

The electric *refrigerator* of 1942 will have more than 50 plastic parts, and a survey indicates that more than 77 plastic applications are possible.

Japan is eating *artificial butter* made from oil in peanuts, cottonseed, coconuts, soybeans and fish, and is even trying rather smelly whale oil butter.

A scientific expedition has found conclusively that there are enough giant *king crabs* in Alaskan waters to support an American crab industry there.

SCIENCE NEWS LETTER

Vol. 40 OCTOBER 18, 1941 No. 16

The Weekly Summary of Current Science, published every Saturday by SCIENCE SERVICE, Inc., 1719 N St. N. W., Washington, D. C. Edited by WATSON DAVIS.

Subscriptions—\$5.00 a year; two years, \$7.00; 15 cents a copy. Ten or more copies to same address, 5 cents a copy. Back numbers more than six months old, 25 cents.

In requesting change of address, please give your old address as well as the new one, at least two weeks before change is to become effective.

Copyright, 1941, by Science Service, Inc. Reproduction of any portion of SCIENCE NEWS LETTER is strictly prohibited. Newspapers, magazines and other publications are invited to avail themselves of the numerous syndicate services issued by Science Service.

Cable address: Scienservc, Washington. Entered as second class matter at the post-office at Washington, D. C., under the Act of March 3, 1879. Established in mimeographed

form March 18, 1922. Title registered as trademark, U. S. and Canadian Patent Offices. Indexed in Readers' Guide to Periodical Literature, Abridged Guide, and in the Engineering Index.

The Science Observer, established by the American Institute of the City of New York, is now included in the SCIENCE NEWS LETTER.

Members of the American Association for the Advancement of Science have privilege of subscribing to SCIENCE NEWS LETTER, at \$3 a year.

The New York Museum of Science and Industry has elected SCIENCE NEWS LETTER as its official publication to be received by its members.

Advertising rates on application. Member Audit Bureau of Circulation.

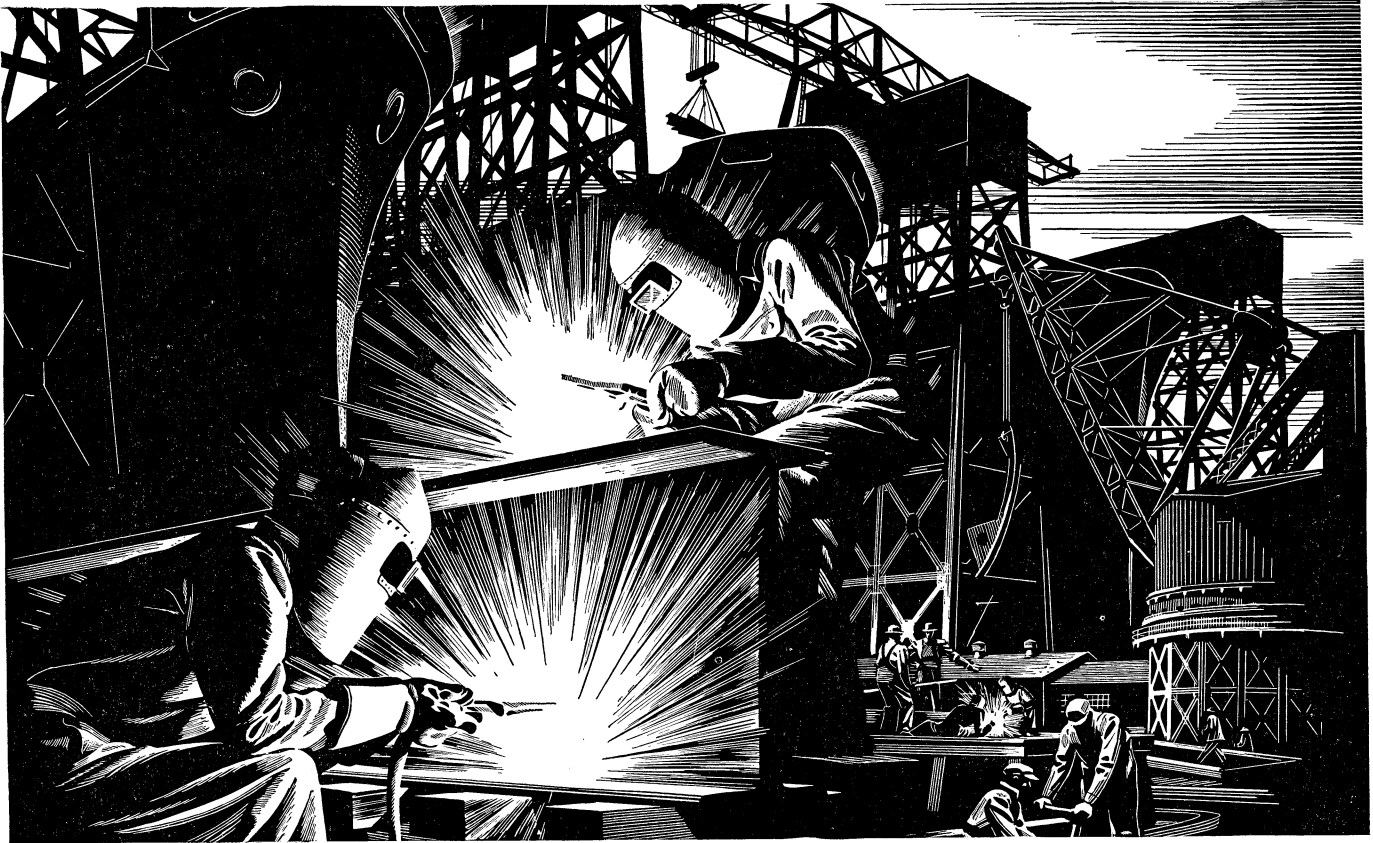
SCIENCE SERVICE is the Institution for the Popularization of Science organized 1921 as a non-profit corporation.

Board of Trustees—Nominated by the American Association for the Advancement of Science: Henry B. Ward, University of Illinois; Edwin G. Conklin, American Philosophical Society; J. McKeen Cattell, Editor, Science. Nominated by the National Academy of Sciences: R. A. Millikan, California Institute of Technology; Harlow Shapley, Harvard College Observatory; William

H. Howell, Johns Hopkins University. Nominated by the National Research Council: Ross G. Harrison, Yale University; C. G. Abbot, Secretary, Smithsonian Institution; Harrison E. Howe, Editor, Industrial and Engineering Chemistry. Nominated by the Journalistic Profession: O. W. Riegel, Washington and Lee School of Journalism; A. H. Kirchhofer, Buffalo Evening News; Neil H. Swanson, Baltimore Evening Sun. Nominated by the E. W. Scripps Estate: Frank R. Ford, Evansville Press; Warren S. Thompson, Miami University, Oxford, Ohio; Harry L. Smithton, Cincinnati, Ohio.

Officers—Honorary President: William E. Ritter. President: Edwin G. Conklin. Vice-President and Chairman of Executive Committee: Harlow Shapley. Treasurer: O. W. Riegel. Secretary: Watson Davis.

Staff—Director: Watson Davis. Writers: Frank Thone, Emily C. Davis, Jane Stafford, Marjorie Van de Water, Morton Mott-Smith. Science Clubs of America: Joseph H. Kraus, Margaret E. Patterson. Photography: Fremont Davis. Librarian: Minna Gill. Business Manager: Alvin C. Stewart. Sales and Advertising: Hallie Jenkins, Austin Winant. Correspondents in principal cities and centers of research.



MASKED MEN

Build Ships Faster

The arc welder in his weird-looking mask is probably the most important factor in speeding this country's ship-building program. And Westinghouse has played an important part in the development of improved welding equipment resulting in the timesaving methods now used in shipyards.

Westinghouse was one of the first to use welded sheet steel in the construction of heavy-duty motors and generating equipment. Being one of the largest industrial users of arc welding, as well as a manufacturer of welding equipment, gives Westinghouse exceptional opportunities for testing welding apparatus. Thus new developments are proved under actual service conditions.

Shipbuilding is only one of many arc welding jobs. Today, Westinghouse Multiple Welders, general purpose a-c and d-c welders, Weld-o-trol

equipment for spot welding, and associated welding apparatus have opened the way for the application of arc welding on widely diversified jobs. Welding is speeding production in scores of industries.

The same study and research that has brought this equipment to its present state of useful efficiency is constantly being devoted to other timesaving Westinghouse electrical apparatus. Experienced engineers are helping to solve many production problems through the intelligent application of this equipment. You, too, can use this service.

Westinghouse Electric & Mfg. Co.,
East Pittsburgh, Pennsylvania.

Westinghouse

Time-Saver For American Industry

ELECTRICAL POWER SPEEDS PRODUCTION

No American manufacturer can afford to overlook the modern methods and equipment offered by the electrical industry for speeding up production. A phone call will bring a Westinghouse representative to your office to discuss your problems.

Future advertisements on this page will describe how Westinghouse is helping in the aviation . . . mining . . . steel . . . metal-working . . . and other industries. Watch for these stories.

