

• New Ideas and Gadgets •

For sources of more information on new things described, send a self-addressed stamped envelope to SCIENCE NEWS LETTER, 1719 N St., N.W., Washington 6, D. C., and ask for Gadget Bulletin 1086. To receive this Gadget Bulletin without special request each week, remit \$1.50 for one year's subscription.

⚙️ **SLIDE PROJECTOR** with wireless remote control uses ultrasonic or silent sound to focus and change slides. Transmitters on remote control unit are operated by two buttons and permit speaker to illustrate lecture while moving about room without call of "next slide please." It can be operated from distances of more than 40 feet.

• Science News Letter, 79:224 April 8, 1961

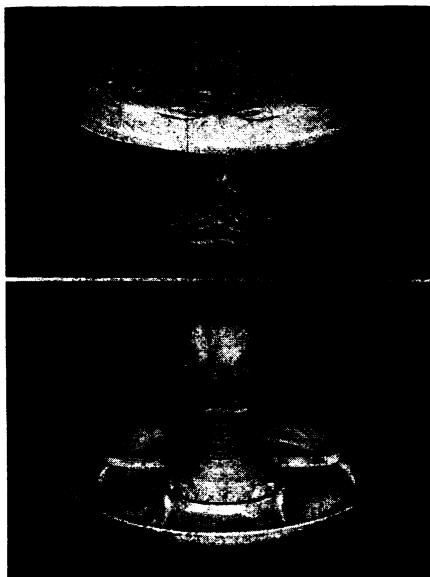
⚙️ **AUTO LIGHT KIT** provides emergency protection from the hazards of auto light failure while driving. Three miniature lamps in a plastic case can be used for prompt replacement of stoplight, taillight, signal or parking light burnouts. Available in both 6-volt and 12-volt lamp sizes, the kit fits into glove compartment.

• Science News Letter, 79:224 April 8, 1961

⚙️ **TUFT-DYED RUGS** in well-defined multi-colored patterns now are available both in cut and loop pile by a new single operation method. The number of colors in individual patterns ranges from four to six, and patented method allows unlimited scope in design.

• Science News Letter, 79:224 April 8, 1961

⚙️ **CAKE STAND**, shown in the photograph, is a two-piece set which when reversed separates into a divided relish tray



and center vase. The set is made of milk glass with a carved leaf and floral design.

• Science News Letter, 79:224 April 8, 1961

⚙️ **CLASSROOM RECORD BOOK** makes attendance taking and daily grading simple and easy. The book, designed by a teacher, consists of pages providing space for six

classes. Each page has eight rows of pockets up and down, representing rows of classroom seats. Student prints required data on his card and cards are placed in pockets partially exposed, allowing easy check.

• Science News Letter, 79:224 April 8, 1961

⚙️ **STARTING PLATFORMS** for swimming meets are available in sets of eight colors to match score cards of timers and judges. The hollow, warp-proof, rot-proof plastic platforms can be stacked for easy storage and can be fitted to any pool deck contour with simple hand tools.

• Science News Letter, 79:224 April 8, 1961

⚙️ **SLIDE RULE KIT** lets the "do-it-yourselfer" construct his own special slide rule for recurring calculations connected with his special work. Kit contains parts for making three basic slide rules as well as many variations, a plastic scale plotting ruler, a universal logarithmic chart and instructions.

• Science News Letter, 79:224 April 8, 1961

⚙️ **LAWN MARKER** made from heavy gauge steel with white baked enamel finish adds polite note to green lawn. It says "please" instead of "don't" or "keep-off." Marker stands 12 inches high and can be placed anywhere.

• Science News Letter, 79:224 April 8, 1961



Nature Ramblings



Do You Know?

➤ EARLIEST OF ALL the commoner woodland plants is the hepatica. It sends forth its delicate white or bluish flowers from among the tough, winter-purpled leaves of the previous season's growth, while the bite of frost is still in the air, and the dead leaves round about hold little handfuls of half-thawed and re-frozen snow.

It is a thing to which we are apt to give little thought, but it is true that the woods harbor many more kinds of evergreens down at the roots of the trees than can be counted among the pines and spruces and cedars. Of this lesser evergreen population the hepatica is one of the most frequently found specimens.

Its thickish hairy-stemmed foliage lasts over from one year into the next, and does not die and wither until well into the following summer.

It is easy in most cases, however, to distinguish between this spring's leaves and last summer's, not only by the smaller size of the new leaves but also by the purplish color of the old. It seems to be a case of autumn coloration without the shedding of the leaves.

Hepatica



This purplish tinge, combined with the three-lobed shape of the leaves, suggested small livers to the ancients, from which its name hepatica, which translates literally into the common English title, liver-leaf.

According to the ancient medical doctrine of "signatures," any plant or plant part that looked like an animal or animal organ was supposed to be good for the ailments of that organ. So the medical men of bygone days made brews and messes of this harmless and beautiful little plant for patients with liver ailments.

• Science News Letter, 79:224 April 8, 1961

The United States uses nearly 40,000,000 tons of paper and paperboard a year.

French scientists are building a power plant using ocean tides for power.

A new pill box sounds an alarm when it is time for a patient's medicine.

Rust-resistance found only in the wild oat Saia has successfully been transferred to commercial oat varieties.

Scientific experiments indicate that too much light given chickens at too young an age reduces egg production.

The world's first high-power spiral ridge cyclotron, a new type atom smasher with more power in a smaller package, is now in operation.

Although fatal accidents among the United States farm population have decreased in the last decade, they still are responsible for about 11,700 deaths each year.

• Science News Letter, 79:224 April 8, 1961