

• New Ideas and Gadgets •

For sources of more information on new things described, send a self-addressed stamped envelope to SCIENCE NEWS LETTER, 1719 N St., N.W., Washington 6, D. C., and ask for Gadget Bulletin 1113. To receive this Gadget Bulletin without special request each week, remit \$1.50 for one year's subscription.

⚙️ **DECONTAMINATION FOUNTAIN** for laboratories, factories or schools offers first aid for eye, nose or mouth contaminated with acids or other foreign matter. Standing upright when not in use, the chromeplated spray bar releases an instantaneous flow of water 8 by 8 inches when swung down into position. The entire face is thus bathed.

• Science News Letter, 80:262 October 14, 1961

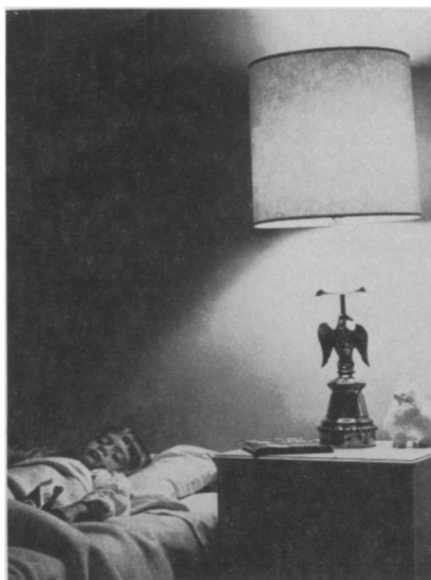
⚙️ **TRACTION MATS** for cars stuck in snow, mud, or on ice have easily applied snap-on spring steel clamps that attach to the tire rim securely to prevent mats from slipping or shooting out. The set consists of two steel diamond mesh panels 28" long and 8" wide plus two clamps.

• Science News Letter, 80:262 October 14, 1961

⚙️ **POCKET SCREWDRIVER** features a handle with built-in clip that makes it easy to carry around in a coat or shirt pocket. Molded of impact-resistant butyrate plastic, the amber clip-on handle prevents poking holes in pockets or awkward bulges. The screwdriver is available in two pocket-size lengths.

• Science News Letter, 80:262 October 14, 1961

⚙️ **TWO-IN-ONE LIGHT BULB** can be changed from a bright light into a night light by simply switching to "glow" position. Designed for use in the conventional three-way socket, the lamp, shown in the



photograph and available in two sizes, is made in the new eye-saving cylindrical shape coated inside with special glare-deflecting particles.

• Science News Letter, 80:262 October 14, 1961

⚙️ **THREE-DIMENSIONAL TIC-TAC-TOE** is a game for all ages with rules the same as for tic-tac-toe but on a three-dimensional scale, horizontal, diagonal or vertical.

Four 8-inch-square clear plastic shelves marked in checkerboard pattern snap together to form tiers 3 inches apart. Colored polyethylene chips are used as markers.

• Science News Letter, 80:262 October 14, 1961

⚙️ **AUTOMATIC SLIDE PROJECTOR** has an automatic interval timer that can be used 12 feet away from the projector to allow the operator to join the audience. The timer can be set at various intervals from 5 to 60 seconds and modified to hold, reject or repeat any slide. The tray holds up to 45 two-by-two slides.

• Science News Letter, 80:262 October 14, 1961

⚙️ **AUTOMATIC RECRYSTALLIZER** that purifies small quantities of organic compounds under full automatic control is particularly useful where very pure materials are required. The 25-pound instrument, a foot square, is made of stainless steel and monel metal with corrosion-resistant polyethylene tubing.

• Science News Letter, 80:262 October 14, 1961

⚙️ **SNAP-IN HEARING AID** is a capsule containing a micro-miniature sound amplifier that can be snapped in and out of especially designed eyeglass frames. Temple bars of lightweight aluminum make the instrument virtually undetectable and also mildew proof. The easily removable capsule can be transferred to different frames.

• Science News Letter, 80:262 October 14, 1961



Nature Ramblings



Do You Know?

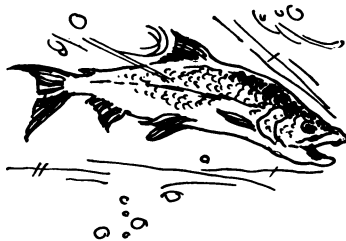
► IN THE MORE southerly salmon streams, the fish that made their run last spring are now returning to sea, depleted of their eggs and milt. But far to the north, in Labrador and the upper reaches of Alaska, there are salmon just entering the rivers.

The salmon run, still not completely understood, lasts all summer long. It starts early in the south, and the fish stay upstream for a considerable time. In the north it starts later and is over sooner. Both north and south, the salmon lay their eggs at nearly the same time—late September and early October.

The eggs remain unhatched all winter, and only the return of warmth in spring brings out the tiny fish, which then make their way to the oceans where they will feed and grow for several years.

The salmon have been using this timetable of migration and spawning for centuries, and recent experiments indicate that it is essential to their well-being, if not their survival.

Salmon



Within the last few years, the Washington State Department of Fisheries succeeded in raising chinook and silver salmon to maturity in captivity.

When confined to salt water ponds, the salmon matured in two to five years, just as rapidly as those who make the perilous journey to and from the sea.

But the captives did not grow very large and the females laid only about one-tenth as many eggs as the free salmon.

• Science News Letter, 80:262 October 14, 1961

Boron, used in high energy rocket fuels, is now applied to cancer research.

TV violence inspires aggressive behavior in children, it is believed.

The strength of pure silver is increased five times by blending into it a small percentage of tiny sapphire "whiskers."

Congestive heart failure is usually the result of a heart whose pumping efficiency is dwindling faced by a heavy and usually increasing circulatory load.

Sheep fed alfalfa pellets containing 5% of dicalcium phosphate are protected against poisonous oxalates in weed.

Certain chemical fire inhibitors are significantly more effective when applied to the air around the flame rather than to the burning fuel or to the flame.

• Science News Letter, 80:262 October 14, 1961