

• New Ideas and Gadgets •

For sources of more information on new things described, send a self-addressed stamped envelope to SCIENCE NEWS LETTER, 1719 N St., N.W., Washington 6, D. C., and ask for Gadget Bulletin 1115. To receive this Gadget Bulletin without special request each week, remit \$1.50 for one year's subscription.

⚙️ **FALLOUT SHELTER RADIATION DETECTOR** eliminates the need to go outside the shelter to check radiation levels. Waterproof and resistant to ordinary hazards, the battery-run detector is mounted outside the shelter and connected by a 50-foot cable to an indicator within. The instrument dial is read directly with dangerous radiation levels shown in red.

• Science News Letter, 80:296 October 28, 1961

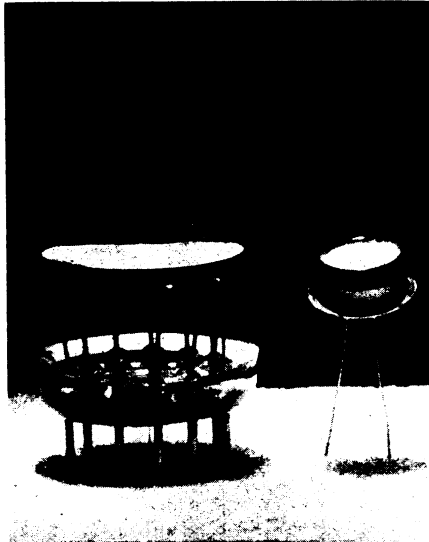
⚙️ **COMPACT TRANSISTOR CHECKER** weighing less than two pounds allows the researcher or technician to evaluate any general purpose, audio, low power and switching transistors of both NPN and PNP types by pushing a button and reading a meter. Useful for checking manufacturer's ratings, it will detect defective mechanisms and predict failure.

• Science News Letter, 80:296 October 28, 1961

⚙️ **PORTABLE CAR DESK** with magnetic pencil is convenient for making notes in the car. Gripped between seat and back of the car, a continuous writing surface is supplied by 3½-inch adding machine tape which can be torn off or fed back into the desk as used. The cover opens to convenient storage sections.

• Science News Letter, 80:296 October 28, 1961

⚙️ **ELECTRONIC EYES**, shown in the photograph, are highly sensitive cadmium sulfide photoconductive cells that react to



varying light intensities. Available in four basic sizes, the cells can be used to turn on street lights, adjust lens opening of cameras, for blood pressure gauges, burglar alarms, headlight dimmers, radiation detectors and many other devices.

• Science News Letter, 80:296 October 28, 1961

⚙️ **MOON MODEL** 12 inches in diameter and weighing ¾ of a pound is scaled to size and made of tough, washable plastic that can be marked without harm to emphasize

any of the 30,000 formations shown. With proper lighting and rotation, moon phases can be shown. The half invisible from the earth is left blank to add any satellite information.

• Science News Letter, 80:296 October 28, 1961

⚙️ **DOG IDENTIFICATION TAG** that will help assure protection to the animal is a heavy, chrome-plated metal disk 1¼-inches in diameter on which the pet's name, and owner's name, address and telephone number are deeply engraved. The tag attaches to the dog's collar with a hook.

• Science News Letter, 80:296 October 28, 1961

⚙️ **OPTICAL STAR FINDER** using an optical illusion enables the viewer to see a projection of a star chart, showing Orion, the Big Dipper, etc., on the sky superimposed over the corresponding star group. Battery operated for outside night use, the set includes the viewer, 30 circular charts of well-known constellations, and battery. Non-technical, the finder is easy to use.

• Science News Letter, 80:296 October 28, 1961

⚙️ **DISHWASHER SILVERWARE BASKET** has a snap-on lid for the center of its three sections that will securely hold small items, such as baby bottle nipples and small plastic utensils, while allowing detergent and water to circulate freely within the basket. Self-standing, it can be loaded on the counter or table top.

• Science News Letter, 80:296 October 28, 1961



Nature Ramblings



Do You Know?

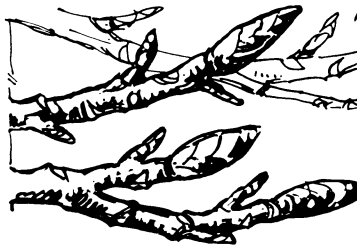
► WINTER is necessary for the survival of some plants. These include a number of perennials that require an interval of dormancy in order to survive. Their roots and tubers undergo a sort of hibernation that produces an effect of lifelessness.

A great many ornamental shrubs and trees meet the season of snows and freezing temperatures by losing leaves. This is a safety measure devised by nature, for death comes to plants during freezing temperatures if ice crystals form inside the leaves. The crystals are likely to penetrate the living cells of the leaves, and thus destroy them.

Many buds formed in the late autumn have to undergo a freeze if they are to open in the spring. The buds on a branch of forsythia cut and brought into the house before there has been a frost never open. But a branch cut in January or February and brought indoors will flower before spring.

Shrubs that retain leaves during winter

Plants in Winter



have a way of protecting themselves. The rhododendron rolls up its leaves when the temperature drops. On a bitter cold day, the leaves of this woody shrub are curled tightly. Such curling exposes less leaf area to the bite of winter winds and freezing temperatures.

Narrow-leaved evergreens cannot curl. But to protect the leaves of such trees in winter, nature provides a waxlike substance known as the "cuticle."

• Science News Letter, 80:296 October 28, 1961

Pears, unlike other fruits, develop their best flavor and texture when ripened off the tree.

Half of the people in Latin America are without running water in their homes.

A young woman in the U. S. today can anticipate spending about 25 years of her married life working outside the home.

Relative to body weight, the hummingbirds have the biggest hearts in birddom.

Women over 50 require more vitamin B-1 than do younger women.

Hawaii is one of the few rabies free areas in the Pacific.

The Pacific basin covers about one-third the surface of the earth and contains more than half the world's volume of water.

• Science News Letter, 80:296 October 28, 1961