

before the latter published his results.

So to date there has not been brought any valid argument, either theoretical or

experimental, against the General Theory of Relativity.

Science News Letter, March 21, 1936

GEOLOGY

Great Lakes Harbors Growing Deeper Due to Tilt

American Side Gaining at Expense of Canada Through Natural Laws Beyond Control of Either People

CANADA and the United States may have reciprocal trade agreements but the United States is benefiting at the expense of Canada in another matter over which man-made laws have no control. Harbors on the American side of the Great Lakes are getting deeper and those in Canada are becoming shallower.

The reason, as revealed by Capt. H. V. Canan, U. S. Corps of Engineers, is that the region about the Great Lakes is tilting about a "hinge line" which roughly is in the direction of 20 degrees west of north.

This tilt, says Capt. Canan (*The Military Engineer*, March-April), is generally improving conditions in harbors on

the American side of the Great Lakes. He said:

"This action is material rather than merely of scientific interest and amounts to as much as 0.3 feet in some harbors. Considering vast harbor areas which are maintained to prescribed depths, a large saving in maintenance dredging costs will result when the effect of tilt on American harbors is given proper consideration.

"This uplift also affects the flow and the flow equations in the connecting rivers of the Great Lakes, and in computing flows for these rivers over extended periods its effects are clearly recognizable. Tilt has also been a factor in decreasing

the available depths over the sills of the locks at Sault Ste. Marie, Michigan.

"Much of the evidence presented of decreasing lake levels is in reality the effect of tilt. Reports indicate that in about 1860, North Bay, Wisconsin, was an important harbor for schooner navigation, as many as 35 boats tying up there at one time. Adjoining a rock ledge, old ring bolts used for mooring these boats can still be found. Correcting the present charts for the stage of 1860, only about 3 feet of water would have been available. This loss of depth can only be attributed to earth tilt."

Describing what effect the observed land tilting will have on the future of the Great Lakes, Capt. Canan says:

"There has been much sensational speculation as to the geological future of the Great Lakes. Rather than the danger of the lakes draining down the St. Lawrence through failure of the outlet plugs, the more apparent danger, if tilt persists, is the draining of the Great Lakes above Niagara down the Mississippi system. While speculation of this sort may be mentally stimulating, any danger is so remote, and the engineering steps necessary for prevention are so relatively simple, that there is little danger of losing the vast investment made by the United States and Canada on the Great Lakes."

Generally accepted explanation for the land tilt on a line passing through the Great Lakes is that the land to the north, in Canada, is still rising from the enormous squeezing which it received during the last Ice Age.

Science News Letter, March 21, 1936

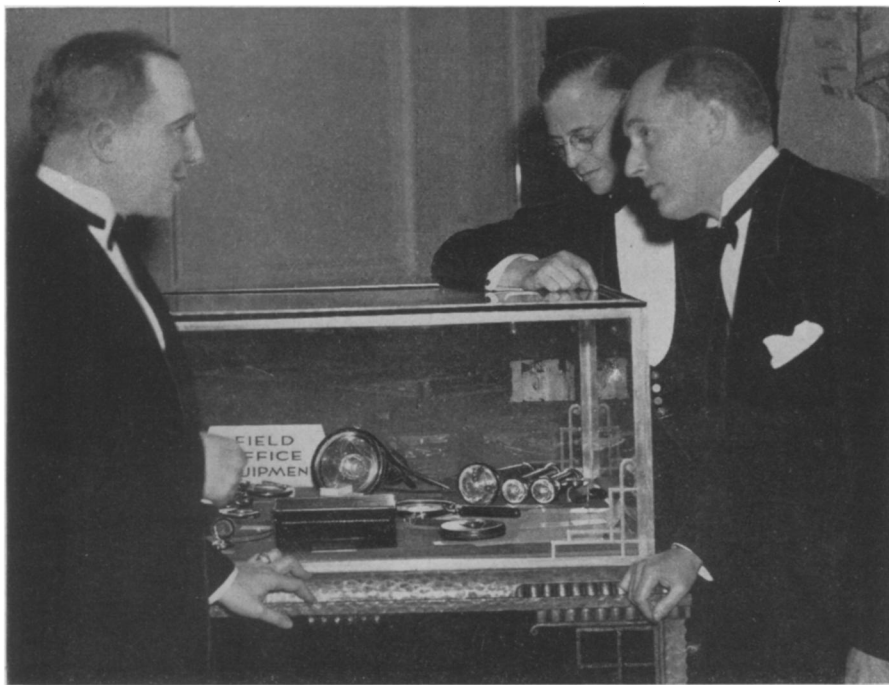
CRIME DETECTION

Demonstration Shows How Science Aids Against Crime

A GRIM exhibit awaits visitors to the scientific exhibit halls of historic Franklin Institute in Philadelphia this spring.

There, beside the Planetarium that can transport you thousands of years in time or millions of miles in space, will be a new series of demonstrations emphasizing the hard realities of the present-day social problem of crime.

The dull footfalls of half a million armed men may be heard walking abroad in this land today, Director Henry Butler Allen of the Franklin Institute said at the ceremony opening the new exhibits. No neutrality law can be invoked to protect America against becoming involved in the depredations of



KIT OF MODERN "SHERLOCK"

L. C. Schilder (left), chief of the Identification Division, Federal Bureau of Investigation, shows W. Chattin Wetherill, Vice-President, and Henry Butler Allen (right), secretary and director of the Franklin Institute, the field office equipment used by Department of Justice crime fighters. Mr. Schilder, as personal representative of J. Edgar Hoover, director of the Bureau of Investigation, took part in the ceremonies opening a new series of demonstrations on "Science in Crime Detection" at Franklin Institute.

this army. Its members are public enemies, but not those of any foreign power. It is the army of crime.

But the laws of science do provide weapons for the hands of the officers of justice. The place of science in crime suppression was told at the opening ceremony by L. C. Schilder, personal representative of J. Edgar Hoover, Director of the Federal Bureau of Investigation, U. S. Department of Justice.

The science of dactylography—known to everyone as fingerprinting—affords a possibility of establishing identity for the protection of the innocent and conviction of the guilty. But more than that, it enables justice officials to follow the career of the criminal from place to place and crime to crime. Each day some 4,000 fingerprints come pouring in to the Department of Justice in Washington from 9,000 agencies in all parts of the world. These do not age; they remain always perfect identification of the individual. For fingerprints are changeless from about two months before the individual comes into the world until after he has left it.

The microscope in the crime detection laboratory, through the study of hair, bits of clothing, even dust, makes possible feats of detection that would have been considered miraculous a generation ago.

RADIO

Radio Tube Without Filament Aid to Radio and Television

A NEW type radio tube without a filament and having potentialities in the development of television and the design of light-weight radio transmitters for aircraft was shown for the first time publicly before the meeting of the Institute of Radio Engineers by Philo T. Farnsworth, Philadelphia radio and television engineer.

The new radio tube is of the cold-cathode type and is known as the Multipactor. The operation of the tube, said Mr. Farnsworth, is based upon the harnessing of so-called secondary electrons which are emitted by certain metals when bombarded by other electrons inside the tube.

High amplification is achieved because a single free electron inside the tube liberates a million electrons from the cold cathode surfaces when it strikes. And it does this in a millionth of a sec-

The science of chemistry lends aid in the analysis of blood, in cases of poisoning and in many other ways.

Photography, especially photomicrography, X-ray photography, and photography by ultraviolet light, provides society with another weapon.

Psychology and education of the public to a greater appreciation of the use of science and the problems of the police have yet to play their part, and the most important part in crime prevention, Mr. Schilder indicated. It is in this connection that the new exhibit was arranged by the Institute with the cooperation of law-enforcing agencies.

"Before the growing menace of murder, kidnaping, fraud, and violence can be stamped out in America, the minds of young boys and girls must be brought to an appreciation of the values of peace and security and honest dealing," he said. "Somehow the ideals of men and women must be raised to higher standards."

So now at the Franklin Institute, exhibit cases of guns, bullet-proof vests and shields, and the death mask of an arch-criminal who died of violence, offer for the first time publicly their mute but dramatic testimony of the need for a new psychological influence in the nation.

Science News Letter, March 21, 1936

ond. Inside the tube the million freed electrons in turn strike the metal surfaces and liberate a million times a million other electrons from the cathode.

Enormous currents are thus quickly built up inside the tube which, if left uncontrolled, would release enough electrons to be equivalent to all the electric current consumed by all the electrical apparatus in the world.

While this great current gain is theoretically possible it is, of course, never achieved in practice, for the tube would naturally quickly have its parts fused together.

The free electrons of the tube which start the bombardment and the subsequent amplification gains in current, said Mr. Farnsworth, are normally present in the tube because of the action of natural radioactivity or cosmic rays, or because the electrons are released from

metals by the action of light (photoelectric effect).

Quicker Response

The new tube, Mr. Farnsworth indicated, should be of great advantage in television transmission because of its quicker response and amplification. He also predicted that it would have considerable influence in the design of future radio transmitters, mentioning, especially, transmitting sets for aircraft where the question of weight and simplicity is of the highest importance.

The revolutionary part of this tube is that it operates without a hot filament, whereas in the standard type of present day radio tubes amplification is secured by the boiling off of electrons from the hot cathodes. This new tube operates by recruiting electrons from a cold surface. Because there is no heating of elements required, there is little loss of efficiency. Radio transmitters thus may be built with fewer tubes, operating at a much higher efficiency.

Quart-Size

In the I. R. E. demonstration one thousand watts of power were drawn from a tube about the size of a quart container. Because of its very high efficiency in the ultra-high frequency, the tube will materially decrease the cost of equipment for broadcasting stations using the ultra-high frequencies. This is particularly true of television.

Mr. Farnsworth pointed out that this decrease in the cost of transmitters for television would undoubtedly have some effect in overcoming the reluctance of broadcast station owners in the launching of television stations.

Probably the most interesting feature to the radio engineer is that in some of the designs of Farnsworth tubes, no filament, or heated cathode, of any type is used or needed. The great advantage of this can be seen when it is remembered that the life of ordinary tubes now in use ends when the filament burns out. Therefore, if these filamentless Farnsworth Multipactor tubes are operated within their ratings, there appears to be no good reason why they should not last indefinitely.

Science News Letter, March 21, 1936

There are more acres of tree land on American farms than acres of any other crop.

Removing very small impurities in common metals may so alter their properties that the pure metal is like a new product, not merely an improved one.