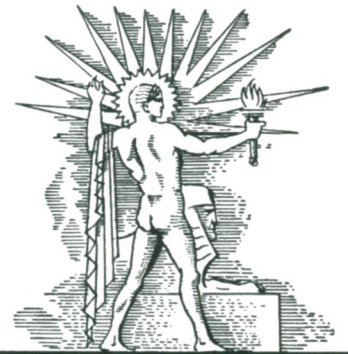
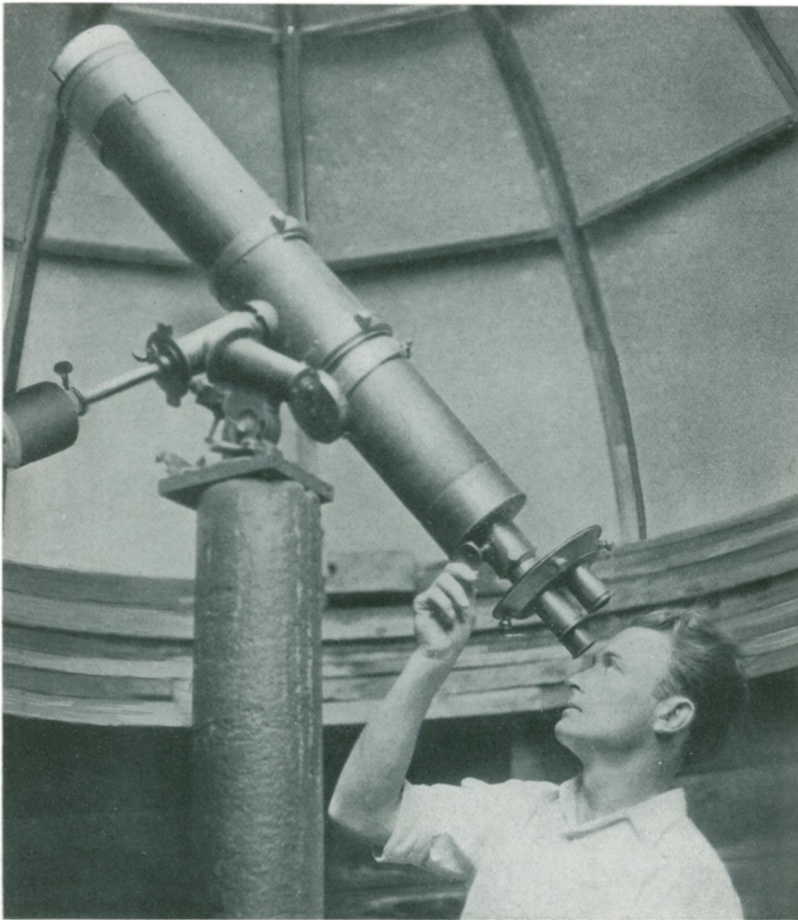


PRICE  
15¢

# SCIENCE NEWS LETTER

THE WEEKLY SUMMARY OF CURRENT SCIENCE ●



JULY 11, 1936

Comet Discoverer

See Page 24

A S C I E N C E S E R V I C E P U B L I C A T I O N

# SCIENCE NEWS LETTER

Vol. XXX



No. 796

The Weekly Summary of

## Current Science

Published Every Saturday by

SCIENCE SERVICE

2101 Constitution Avenue

Washington, D. C.

THE INSTITUTION FOR THE POPULARIZATION OF SCIENCE organized 1921 as a non-profit corporation, with trustees nominated by the National Academy of Sciences, the National Research Council, the American Association for the Advancement of Science, the E. W. Scripps Estate and the journalistic profession.

Edited by WATSON DAVIS

Subscription rates—\$5.00 a year postpaid; two years \$7.00; 15 cents a copy. Ten or more copies to same address, 5 cents a copy. Back numbers more than six months old, 25 cents.

Canadian subscribers please add 50 cents a year, foreign subscribers 75 cents a year to regular subscription rate to cover postage.

Members of the American Association for the Advancement of Science have the privilege of subscribing to SCIENCE NEWS LETTER at the reduced price of \$3 per year. Application for this privilege should be accompanied by privilege card obtained from the Permanent Secretary, A.A.A.S., Smithsonian Institution Building, Washington, D. C.

In requesting change of address, please give your old address as well as the new one in notification to Circulation Department, SCIENCE NEWS LETTER, 2101 Constitution Ave., Washington, D. C., at least two weeks before change is to become effective.

Copyright, 1936, by Science Service, Inc. Reproduction of any portion of the SCIENCE NEWS LETTER is strictly prohibited. Newspapers, magazines and other publications are invited to avail themselves of the numerous syndicate services issued by Science Service.

Entered as second class matter at the post-office at Washington, D. C., under the act of March 3, 1879. Established in mimeographed form March 13, 1922. Title registered as trademark, U. S. and Canadian Patent Offices.

Advertising rates furnished on application. Member Audit Bureau of Circulations.

### Board of Trustees of Science Service

*Honorary President*, William E. Ritter, University of California. *Honorary Vice-President*, Vernon Kellogg, National Research Council. Representing the American Association for the Advancement of Science, J. McKeen Cattell, *President*, Editor, Science, Garrison, N. Y.; Burton E. Livingston, Johns Hopkins University; Baltimore, Md.; Henry B. Ward, *Permanent Secretary*, A.A.A.S. Representing the National Academy of Sciences, W. H. Howell, *Vice-President and Chairman of Executive Committee*, Johns Hopkins University, Baltimore, Md.; R. A. Millikan, *Director*, Norman Bridge Laboratory of Physics, California Institute of Technology, Pasadena, Calif.; Harlow Shapley, *Director*, Harvard College Observatory, Cambridge, Mass. Representing National Research Council, Ludvig Hektoen, John McCormick Institute for Infectious Diseases, Chicago, Ill.; C. G. Abbot, *Secretary*, Smithsonian Institution, Washington, D. C.; Harrison E. Howe, *Editor of Industrial and Engineering Chemistry*, Washington, D. C. Representing Journalistic Profession, John H. Finley, *Associate Editor*, New York Times; Mark Sullivan, *Writer*, Washington, D. C.; Marlen E. Pew, *Editor of Editor and Publisher*, New York City. Representing E. W. Scripps Estate, Harry L. Smithton, *Treasurer*, Cincinnati, Ohio; Robert P. Scripps, *Howards Newspapers*, West Chester, Ohio; Warren S. Thompson, Miami University, Oxford, Ohio.

### Staff of Science Service

*Director*, Watson Davis; *Staff Writers*: Frank Thone, Emily C. Davis, Jane Stafford, Marjorie Van de Water, Robert Potter; *Astronomy writer*, James Stokley. Correspondents in principal cities and centers of research. *Librarian*, Minna Gill; *Sales and Advertising Manager*, Hallie Jenkins.

## DO YOU KNOW?

Snow and ice are combined in true hailstones.

Horns of sheep appear triangle-shaped if examined in cross-section.

Some of the coal seams in Pennsylvania's anthracite mines are 100 feet thick.

Argentina is to spend 90 million dollars on a road building program, to continue five years.

Japanese raincoats that sell for about 25 cents are being made of paper impregnated with tung oil.

An anteater walks comfortably on its knuckles, saving its sharp claws for tearing up ant and termite nests.

More than 300 bird-lovers are helping the Michigan Audubon Society to take a bird census of that state.

There is on the average one filling station to every mile and a half of surfaced highway in the United States.

Carpet beetles, also called buffalo bugs, are pronounced second to clothes moths in damaging household fabrics.

A new-type telescoping wagon tongue enables one farmer with a mechanical picker to pick, haul and crib a corn crop conveniently.

The most northerly part of the British Empire is Ellesmere Island, in the Arctic.

It takes some young butterflies only ten minutes to escape from the chrysalis and be ready for flight.

To give bathtubs a non-skid surface, a manufacturer embosses serpentine waves on the floor of the tub.

Snowshoe rabbits that nip young trees are a serious cause of loss in forest plantations of the Lake States.

A research center on ancient man, to learn more about origins of the human race, is to be formed by the Philadelphia Academy of Natural Sciences.

Health officials have shown conclusively that faulty plumbing installations and fixtures can lead to pollution of water supplies.

When Japanese beetles arrived in this country in 1915, they found no disease or natural enemies to stop their progress; but now several organisms have been discovered that spread disease among beetle larvae in the soil.

Along the highways of 37 states, 450 emergency first aid stations are now being operated by the American Red Cross, and locations have been selected for 3,175 more.

## WITH THE SCIENCES THIS WEEK

Most articles are based on communications to Science Service or papers before meetings, but where published sources are used they are referred to in the article.

### AGRICULTURE

What is the condition of vegetation in the drought area? p. 19.

### ARCHAEOLOGY

Did American Indians build pyramids? p. 24.

Where did the log cabin quilt design come from? p. 25.

### ASTRONOMY

What manufacturing process is going on inside stars? p. 22.

Who is Leslie C. Peltier? p. 24.

### AVIATION

Are double-decker aircraft being seriously considered? p. 25.

### CHEMISTRY

Can the virus causing tobacco mosaic be rendered harmless? p. 24.

Where is oil used in solid form? p. 21.

### CLIMATOLOGY

Is the climate of the United States becoming permanently drier? p. 20.

### COMPARATIVE PSYCHOBIOLOGY

Do chimpanzees receive training from their mothers? p. 26.

### MEDICINE

Does the blood of cancer patients differ from that of normal persons? p. 22.

Will sunbaths cause cancer in human beings? p. 22.

### METALLURGY

How much electric power is used by a modern steel mill? p. 23.

### PHYSICS

How much electricity is carried on the surface of human red blood cells? p. 28.

### PSYCHOLOGY

How do psychologists plan to study social problems such as war and unemployment? p. 29.