

ECLIPSE!

June 19, 1936



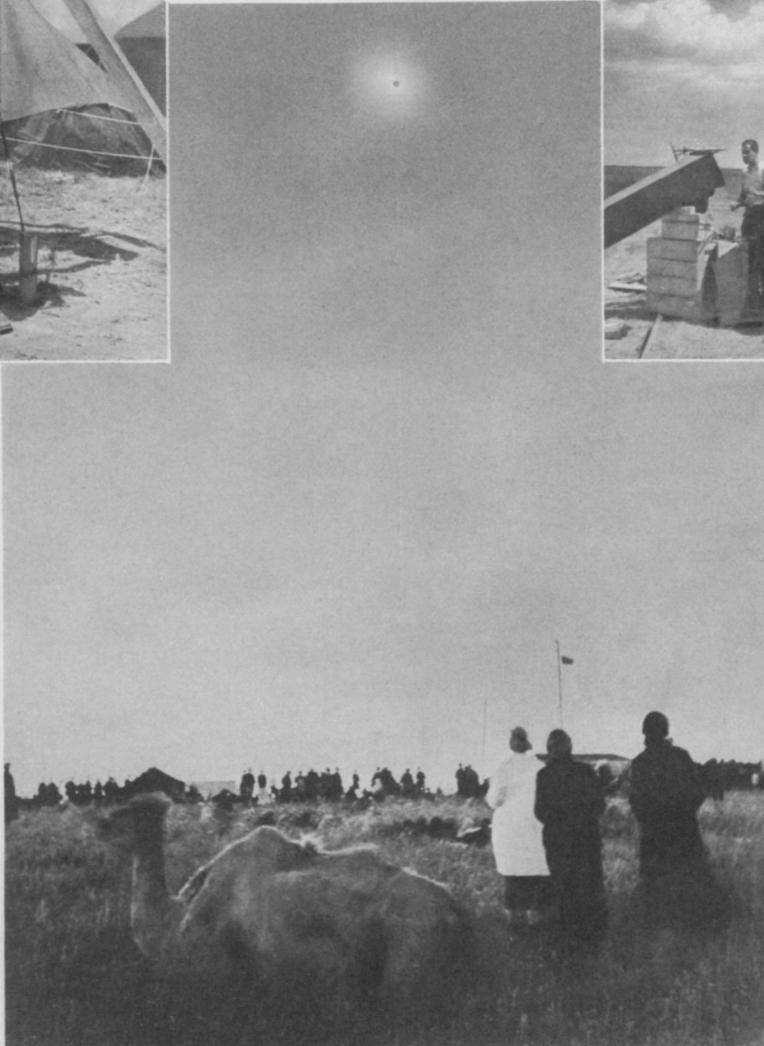
PREPARED

Miss Henriette Swope, member of the Harvard expedition and daughter of Gerard Swope, "stands by" at her instrument.

The photographs on this page were taken by the special news photographer of Sovfoto at Ak-Bulak, U.S.S.R., where the Harvard expedition and that from Pulkovo Observatory, Leningrad, were located.

ENCAMPED

In these quarters the Harvard expedition made ready for the big event. Preparations for a meal are going on at the moment toward the left of the picture.



SETTING UP

Dr. Wallace R. Brode, of Ohio State University, at work on the instruments.

TOTALITY

Silent, tense figures watch a Siberian sun hide its face from view. The picture at left shows the moment of totality.

EXPLAINING

A scientist does his best to prepare the farmer folk of the neighborhood for the awesome spectacle.

