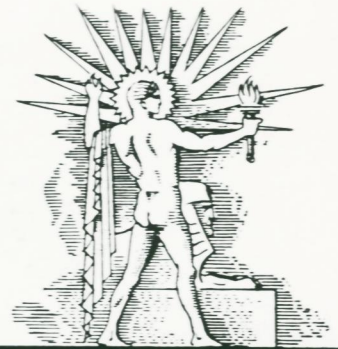
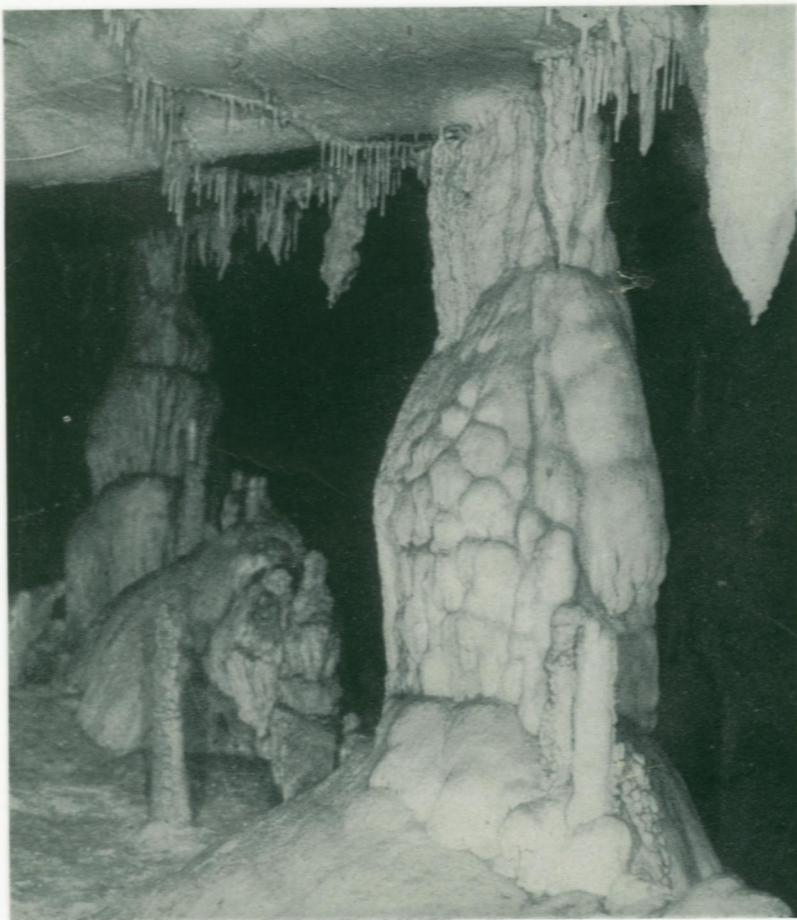


PRICE  
15¢

SCIENCE REVIEW OF THE YEAR

# SCIENCE NEWS LETTER

THE WEEKLY SUMMARY OF CURRENT SCIENCE •



December 25, 1937

Santa in a Cave

See Page 409

A SCIENCE SERVICE PUBLICATION

## Do You Know?

Aviation is becoming one of the chief methods of transportation in Alaska.

More accidents occur in gymnasiums than any other part of school buildings.

In seventeenth century England, geese were sometimes shorn like sheep, instead of being plucked for their feathers.

From what is known of the ancient history of ships, the Phoenicians and Greeks were first to build ships of special type for war.

A glass "cornerstone" containing records has been laid as the foundation block for a Department of Glass Technology at the University of Sheffield, England.

Switzerland uses French, German, Italian languages, and may add a fourth to its officially recognized languages—Romansch, a survival of ancient Latin, which is spoken by 50,000 Swiss people.

Lighthouse Service officials say that perhaps no fleet in the world is more dependent on aids to navigation than Great Lakes freighters that steer through dredged channels and dense traffic along the Detroit River.

Sun glasses made of a recently developed polarizing material are finding favor with fishermen because the glasses eliminate sky reflections on smooth water, so they can more clearly see the fish and stream bottom.

## QUESTIONS DISCUSSED IN THIS ISSUE

Most articles which appear in SCIENCE NEWS LETTER are based on communications to Science Service, or on papers before meetings. Where published sources are used they are referred to in the article.

### ANTHROPOLOGY

At what distant point are the Japanese colonizing? page 408.

Did thought precede erect posture in man? page 410.

### BACTERIOLOGY

Why is it desirable to pour crushed sand into lakes? page 406.

### ENGINEERING

How is an ancient king of Assyria aiding in flood control on the modern Mississippi? page 409.

What is the principal fuel of the world? page 410.

### FORESTRY

Are old trees always large? page 407.

### GEOGRAPHY

How do the Polar scientists keep out cold and snow? page 407.

### MEDICINE

Can the cause of cancer be manufactured within the body? page 406.

What proportion of pneumonia cases can be treated with serums? page 406.

### METEOROLOGY

How many kinds of snow are there? page 409.

### PHYSICS

Does physics need the concept of particles? page 408.

What is contained in "empty space"? page 409.

### PSYCHIATRY

How do mental patients in Russia differ from those in the United States? page 408.

### PSYCHOLOGY

What are some of the devices of the propagandist? page 410.

Pueblo Indians have six cardinal directions—east, west, north, south, above, and below.

One greyhound has a record of running 600 yards in 34 seconds, which is a speed of 36 miles an hour.

Nicaragua has a grasshopper plague so alarming that U. S. government scientists have been consulted regarding ways to fight the pest.

The Central London tube may carry Londoners out eight miles farther, if a twelve million dollar project, already started, is completed.

The population of the United States on July 1, 1937, was estimated at 129,257,000.

German chemists have produced a substitute for the tin can—a container of transparent plastic with top and bottom of tin.

A school for the Canadian quintuplets is planned, in which they will be taught in company with 15 or 20 other neighborhood children.

In well managed forests, pine trees may grow three to four times as fast as those on land that is poorly managed and subject to fire hazards.

## SCIENCE NEWS LETTER

Vol. 32 DECEMBER 25, 1937 No. 872

The Weekly Summary of Current Science, published every Saturday by SCIENCE SERVICE, Inc., 2101 Constitution Avenue, Washington, D. C. Edited by WATSON DAVIS.

Subscriptions—\$5.00 a year; two years \$7.00; 15 cents a copy. Ten or more copies to same address, 5 cents a copy. Back numbers more than six months old, 25 cents.

Canadian subscribers please add 50 cents a year, foreign subscribers 75 cents a year for extra postage.

Members of the American Association for the Advancement of Science have privilege of subscribing to SCIENCE NEWS LETTER at the reduced price of \$3 per year. Application for this privilege should be accompanied by privilege card obtained from the Permanent Secretary, A.A.A.S., Smithsonian Institution Building, Washington, D.C.

In requesting change of address, please give your old address as well as the new one, at least two weeks before change is to become effective.

Copyright, 1937, by Science Service, Inc. Reproduction of any portion of SCIENCE NEWS LETTER is strictly prohibited. Newspapers, maga-

zines and other publications are invited to avail themselves of the numerous syndicate services issued by Science Service.

Cable address: Scienservc, Washington.

Entered as second class matter at the post-office at Washington, D. C., under the act of March 3, 1879. Established in mimeographed form March 18, 1922. Title registered as trademark, U. S. and Canadian Patent Offices. Indexed in Readers' Guide to Periodical Literature and in the Engineering Index.

Advertising rates on application. Member Audit Bureau of Circulations.

SCIENCE SERVICE is the Institution for the Popularization of Science, organized 1921 as a non-profit corporation, with trustees nominated by the National Academy of Sciences, the National Research Council, the American Association for the Advancement of Science, the E. W. Scripps Estate and the journalistic profession.

Board of Trustees—*Honorary President*: William E. Ritter, University of California. Representing the American Association for the Advancement of Science, J. McKeen Cattell, Editor, Science, Garrison, N. Y.; Henry B. Ward, University of Illinois, Urbana, Ill.; Edwin G. Conklin, *President*, American Philosophical Society, Philadelphia, Pa. Representing the National Academy of Sciences, W. H. Howell, *Vice-Presi-*

*dent and Chairman of Executive Committee*, Johns Hopkins University, Baltimore, Md.; R. A. Millikan, Director, Norman Bridge Laboratory of Physics, California Institute of Technology, Pasadena, Calif.; Harlow Shapley, Director, Harvard College Observatory, Cambridge, Mass. Representing National Research Council, Ludvig Hektoen, John McCormick Institute for Infectious Diseases, Chicago, Ill.; C. G. Abbot, Secretary, Smithsonian Institution, Washington, D. C.; Harrison E. Howe, Editor of Industrial and Engineering Chemistry, Washington, D. C. Representing Journalistic Profession, John H. Finley, Editor, New York Times; Mark Sullivan, Writer, Washington, D. C.; Dean Carl W. Ackerman, Columbia University Graduate School of Journalism, New York City. Representing E. W. Scripps Estate, Harry L. Smithton, *Treasurer*, Cincinnati, Ohio; Robert P. Scripps, Scripps-Howard Newspapers, West Chester, Ohio; Warren S. Thompson, Miami University Oxford, Ohio.

*Staff*—Director, Watson Davis; Writers: Frank Thone, Emily C. Davis, Jane Stafford, Marjorie Van de Water, Robert Potter, Ronald L. Ives, Leonard Engel; Correspondents in principal cities and centers of research. Photographer: Fremont Davis; Librarian: Minna Gill; Sales and Advertising: Hallie Jenkins, Austin Winant, Howard Bandy.