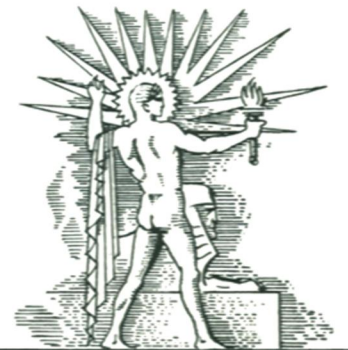
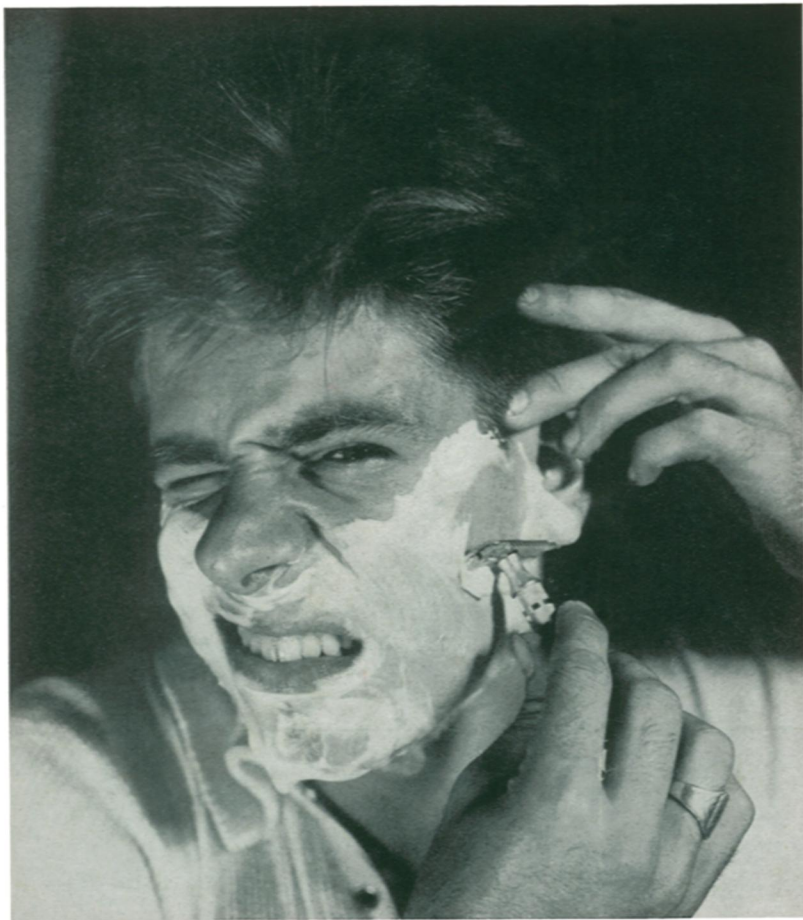


PRICE
15¢

SCIENCE NEWS LETTER

THE WEEKLY SUMMARY OF CURRENT SCIENCE •



July 2, 1938

Suicidal

See Page 10

A SCIENCE SERVICE PUBLICATION

Do You Know?

The peacock was brought to Egypt by the Phoenicians.

Tin cans never reach the dump in one western city; they are dissolved with chemicals and the tin is eventually cast into ingots.

Most volcanic craters are formed by collapse of the volcano's peak, rather than by great explosions, says a volcanologist of the University of California.

A number of states now have food-plant nurseries, where they start trees and other plants that provide nuts, fruits, and berries for birds and animals to eat.

A psychologist says it is no wonder school children write "boners," since words in English have so many definitions: for example, "game" has 15 meanings, "grain" has 30, "fail" has 29, and "account" has 34.

There are two forms of rabies in dogs: the furious form, which leads a dog to fight or bite at anything interfering with its freedom; and the paralytic form, which paralyzes the lower jaw and then progressively the rest of the body.

Spanish padres built their missions at Indian villages, which explains the quaint half-Indian names of the old missions, such as Mission San Jose de Tumacacori—meaning the mission of St. Joseph at the place of many small fenced fields.

QUESTIONS DISCUSSED IN THIS ISSUE

Most articles which appear in SCIENCE NEWS LETTER are based on communications to Science Service, or on papers before meetings. Where published sources are used they are referred to in the article.

ASTRONOMY

Where is the largest known galaxy? p. 3.

AVIATION

Who has made a wooden airplane? p. 8.

BIOCHEMISTRY

Who is the first Isaac Adler prizeman? p. 9.

BOTANY

Are the dragon-trees of the Canary Islands really old? p. 13.

What tree's leaves are "already pressed"? p. 14.

CHEMISTRY

What new use has been found for lignin? p. 13.

ENGINEERING

Is the sleeve-valve engine dead? p. 12.

GEOGRAPHY

How much mud is there in Hwang-Ho water? p. 5.

GEOLOGY

How do gems indicate mountain ages? p. 9.

MEDICINE

Why is warm air recommended for sinus sufferers? p. 7.

What new remedy is used against meningitis? p. 8.

Does alcohol kill trichinae? p. 9.

How do large blood cells function in recovery from pneumonia? p. 9.

ORNITHOLOGY

What is meant by "water migration"? p. 9.

PALEONTOLOGY

Which came first, dinosaurs or snakes? p. 4.

PHOTOGRAPHY

How can blood corpuscles help photographers? p. 8.

PHYSICS

In what three ways can man capture energy from the sun? p. 15.

PHYSIOLOGY

Why do we grow old? p. 6.

Is "blind drunk" ever a literally accurate phrase? p. 8.

PSYCHIATRY

How often have you committed partial suicide? p. 10.

What was "officers' disease"? p. 15.

PUBLIC HEALTH

Why can't recovered TB patients support themselves? p. 4.

An octopus in a fight literally turns red with rage.

Beautiful Yosemite Valley in California was an Indian stronghold until white settlers drove the red men out.

A midget portable device for collecting dust in the air has been designed by the Bureau of Mines, for use in war against breathing harmful dust in industry.

Birds reproduce themselves four to five times faster than mammals.

In the past four or five years some three million acres of land unsuited to agriculture have been added to the national system of waterfowl refuges.

Ancient Rome got silk from China, but so involved was the caravan system which brought the valued goods that neither Rome nor China knew of the other's existence.

SCIENCE NEWS LETTER

Vol. 34 JULY 2, 1938 No. 1

The Weekly Summary of Current Science, published every Saturday by SCIENCE SERVICE, Inc., 2101 Constitution Avenue, Washington, D. C., Edited by WATSON DAVIS.

Subscriptions—\$5.00 a year; two years \$7.00; 15 cents a copy. Ten or more copies to same address, 5 cents a copy. Back numbers more than six months old, 25 cents.

Members of the American Association for the Advancement of Science have privilege of subscribing to SCIENCE NEWS LETTER at the reduced price of \$3 per year. Applications for this privilege should be accompanied by privilege card obtained from the Permanent Secretary, A.A.A.S., Smithsonian Institution Building, Washington, D. C.

In requesting change of address, please give your old address as well as the new one, at least two weeks before change is to become effective.

Copyright, 1938 by Science Service, Inc. Reproduction of any portion of SCIENCE NEWS LETTER is strictly prohibited. Newspapers, maga-

zines and other publications are invited to avail themselves of the numerous syndicate services issued by Science Service.

Cable address: Scienservc, Washington.

Entered as second class matter at the post-office at Washington, D. C., under the act of March 3, 1879. Established in mimeographed form March 18, 1922. Title registered as trademark, U. S. and Canadian Patent Offices. Indexed in Readers' Guide to Periodical Literature and in the Engineering Index.

Advertising rates on application. Member Audit Bureau of Circulation.

SCIENCE SERVICE is the Institution for the Popularization of Science organized 1921 as a non-profit corporation, with trustees nominated by the National Academy of Sciences, the National Research Council, the American Association for the Advancement of Science, the E. W. Scripps Estate and the journalistic profession.

Board of Trustees—*Honorary President*: William E. Ritter, University of California, Representing the American Association for the Advancement of Science, J. McKeen Cattell, Editor, Science, Garrison, N. Y.; Henry B. Ward, University of Illinois, Urbana, Ill.; Edwin G. Conklin, *President*, American Philosophical Society, Philadelphia, Pa. Representing the National

Academy of Sciences, W. H. Howell, *Vice-President and Chairman of Executive Committee*, Johns Hopkins University, Baltimore, Md.; R. A. Millikan, *Director*, Norman Bridge Laboratory of Physics, California Institute of Technology, Pasadena, Calif.; Harlow Shapley, *Director*, Harvard College Observatory, Cambridge, Mass. Representing National Research Council; C. G. Abbot, *Secretary*, Smithsonian Institution, Washington, D. C.; Harrison E. Howe, *Editor of Industrial and Engineering Chemistry*, Washington, D. C.; Ross G. Harrison, *Director*, Osborn Zoological Laboratory, Yale University, New Haven, Conn. Representing Journalistic Profession, John H. Finley, *Editor*, New York Times; J. Edwin Murphy, *Managing Editor*, Baltimore Evening Sun, Baltimore, Md.; O. W. Riegel, *Director*, Lee School of Journalism, Washington and Lee University, Lexington, Va. Representing E. W. Scripps Estate, Harry L. Smithton, *Treasurer*, Cincinnati, Ohio; Warren S. Thompson, *Miami University*, Oxford, Ohio.

Staff—*Director*, Watson Davis; *Writers*, Frank Thone, Emily C. Davis, Jane Stafford, Marjorie Van de Water, Robert Potter, Ronald L. Ives, Leonard Engel; *Correspondents in principal cities and centers of research*, Photography: Fremont Davis; *Librarian*: Minna Gill; *Sales and Advertising*: Hallie Jenkins, Austin Winant, Howard Bandy.