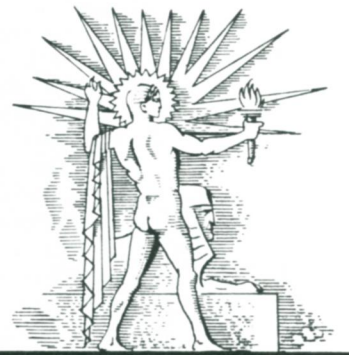
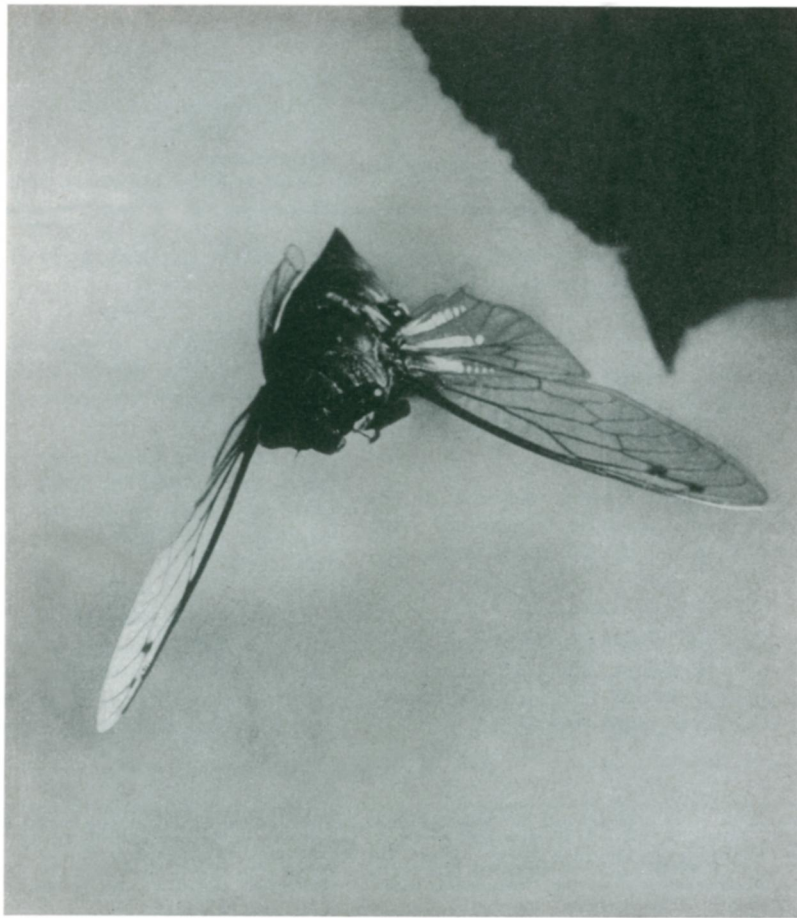


15¢

# SCIENCE NEWS LETTER

THE WEEKLY SUMMARY OF CURRENT SCIENCE ●



August 5, 1939

Photographed for Science

See page 83

A S C I E N C E S E R V I C E P U B L I C A T I O N

## Do You Know?

Except in the sea, insects can thrive where plants can.

One colossal statue in Egypt is made of a granite block of over 100 tons.

Freezing ticks, lice, and fleas does not prevent them from carrying disease, according to tests.

A newborn baby has 270 bones; but some of these join, and a full grown adult has only 206.

Efforts to send lake trout and whitefish eggs to Lake Titicaca in Bolivia are being made by the U. S. Bureau of Fisheries.

Plaster casts of fractured stones are being taken by archaeologists restoring the great prehistoric stone circle at Avebury in England.

British scientists are seeking the whereabouts of Charles Darwin's geological collection from Tasmania, which is not in the Darwin Museum nor otherwise accounted for.

Danish cattle and horse breeders are experimenting with electric fences to enclose stock, since as high as 90 per cent. of domestic hides have shown cuts and scratches from barbed wire.

Blonds are 40 to 170 per cent. more susceptible to ultraviolet rays than brunettes, and men are about 20 per cent. more susceptible than women, says a writer in the *Journal of the American Medical Association*.

## QUESTIONS DISCUSSED IN THIS ISSUE

Most articles which appear in SCIENCE NEWS LETTER are based on communications to Science Service, or on papers before meetings. Where published sources are used they are referred to in the article.

### AERONAUTICS

What was the speed of the first Army airplane? p. 85.

### ASTRONOMY

How many supernovae have ever been observed? p. 84.

How wide are the so-called "canals" of Mars? p. 86.

### CHEMISTRY

What are the three most important groups of chemical raw materials? p. 88.

### ENGINEERING

How heavy is transcontinental tourist travel? p. 89.

### ENTOMOLOGY—PHOTOGRAPHY

How fast does a fruit fly's wings beat? p. 83.

### EXPLORATION

What will be worn by the members of the Antarctic Expedition? p. 88.

### FORESTRY

What proportion of forest fires this year has been started by man? p. 89.

### GEOGRAPHY

How many people will have to move from the path of China's Yellow River? p. 87.

### MEDICINE

How has the Lindbergh-Carrel heart recently contributed to medical research? p. 85.

What may replace anesthetics for surgery of the future? p. 84.

What new remedy has been found for rabbit fever? p. 83.

What type of body cells grow faster at night? p. 88.

### MEDICINE—BOTANY

What is the best way to get rid of ragweed? p. 90.

### METALLURGY

What does silver do for stainless steel? p. 95.

### PHYSIOLOGY

What ailments is the new vitamin K being used to treat? p. 94.

### PSYCHOLOGY

What is baby's first music lesson? p. 88.

Skulls of two shovel-jawed mastodons—million-year-old elephants—have been found in Texas.

It took builders who could swim to construct Minot's Ledge Lighthouse, on a reef outside Boston harbor.

By a new system, pictures six by seven inches can be transmitted from Europe to the United States in 20 minutes.

Most of children's fears are about imaginary things, such as ghosts and bogeymen, it was found in a survey of 400 children aged five to 12.

A pocket gopher's pockets are in its cheeks.

Science has yet to produce stringless celery, but the newest varieties come nearer to it than any before.

A survey at Cornell University indicates that students from farms are twice as likely to become farmers as city boys are to follow their fathers' careers.

In starting a window box, a floriculturist suggests combining vines, and "accent plants" which stand out because of color or form, and "filler plants" which complete the design.

## SCIENCE NEWS LETTER

Vol. 36 AUGUST 5, 1939 No. 6

The Weekly Summary of Current Science, published every Saturday by SCIENCE SERVICE, Inc., 2101 Constitution Avenue, Washington, D. C. Edited by WATSON DAVIS.

Subscriptions—\$5.00 a year; two years \$7.00; 15 cents a copy. Ten or more copies to same address, 5 cents a copy. Back numbers more than six months old, 25 cents.

In requesting change of address, please give your old address as well as the new one, at least two weeks before change is to become effective.

Copyright, 1939, by Science Service, Inc. Reproduction of any portion of SCIENCE NEWS LETTER is strictly prohibited. Newspapers, magazines and other publications are invited to avail themselves of the numerous syndicate services issued by Science Service.

Cable address: Scienservice, Washington.

Entered as second class matter at the post-

office at Washington, D. C., under the Act of March 3, 1879. Established in mimeographed form March 18, 1922. Title registered as trademark, U. S. and Canadian Patent Offices. Indexed in Readers' Guide to Periodical Literature, Abridged Guide, and in the Engineering Index.

Members of the American Association for the Advancement of Science have privilege of subscribing to SCIENCE NEWS LETTER at \$3 a year.

The New York Museum of Science and Industry has elected SCIENCE NEWS LETTER as its official publication to be received by its members.

Advertising rates on application. Member Audit Bureau of Circulation.

SCIENCE SERVICE is the Institution for the Popularization of Science organized 1921 as a non-profit corporation, with trustees nominated by the National Academy of Sciences, the National Research Council, the American Association for the Advancement of Science, the E. W. Scripps Estate and the journalistic profession.

Board of Trustees—Honorary President: William E. Ritter, University of California. Representing the American Association for the Advancement of Science: J. McKeen Cattell, Editor, Science; Henry B. Ward, University of

Illinois; Edwin G. Conklin, President, American Philosophical Society. Representing the National Academy of Sciences: W. H. Howell, Vice-President and Chairman of Executive Committee, Johns Hopkins University; R. A. Millikan, California Institute of Technology; Harlow Shapley, Harvard College Observatory. Representing National Research Council: C. G. Abbot, Secretary, Smithsonian Institution; Harrison E. Howe, Editor, Industrial and Engineering Chemistry; Ross G. Harrison, Yale University. Representing Journalistic Profession: John H. Finley, Editor, New York Times; J. Edwin Murphy, Managing Editor, Baltimore Evening Sun; O. W. Riegel, Washington and Lee School of Journalism. Representing E. W. Scripps Estate: Harry L. Smithton, Treasurer, Cincinnati, Ohio; Warren S. Thompson, Miami University, Oxford, Ohio; W. W. Hawkins, Scripps Howard Newspapers.

Staff—Director, Watson Davis; Writers, Frank Thone, Emily C. Davis, Jane Stafford, Marjorie Van de Water, Robert Potter, Leonard H. Engel; Correspondents in principal cities and centers of research. Photography: Fremont Davis; Librarian: Minna Gill; Sales and Advertising: Hallie Jenkins, Austin Winant, Howard Bandy.