

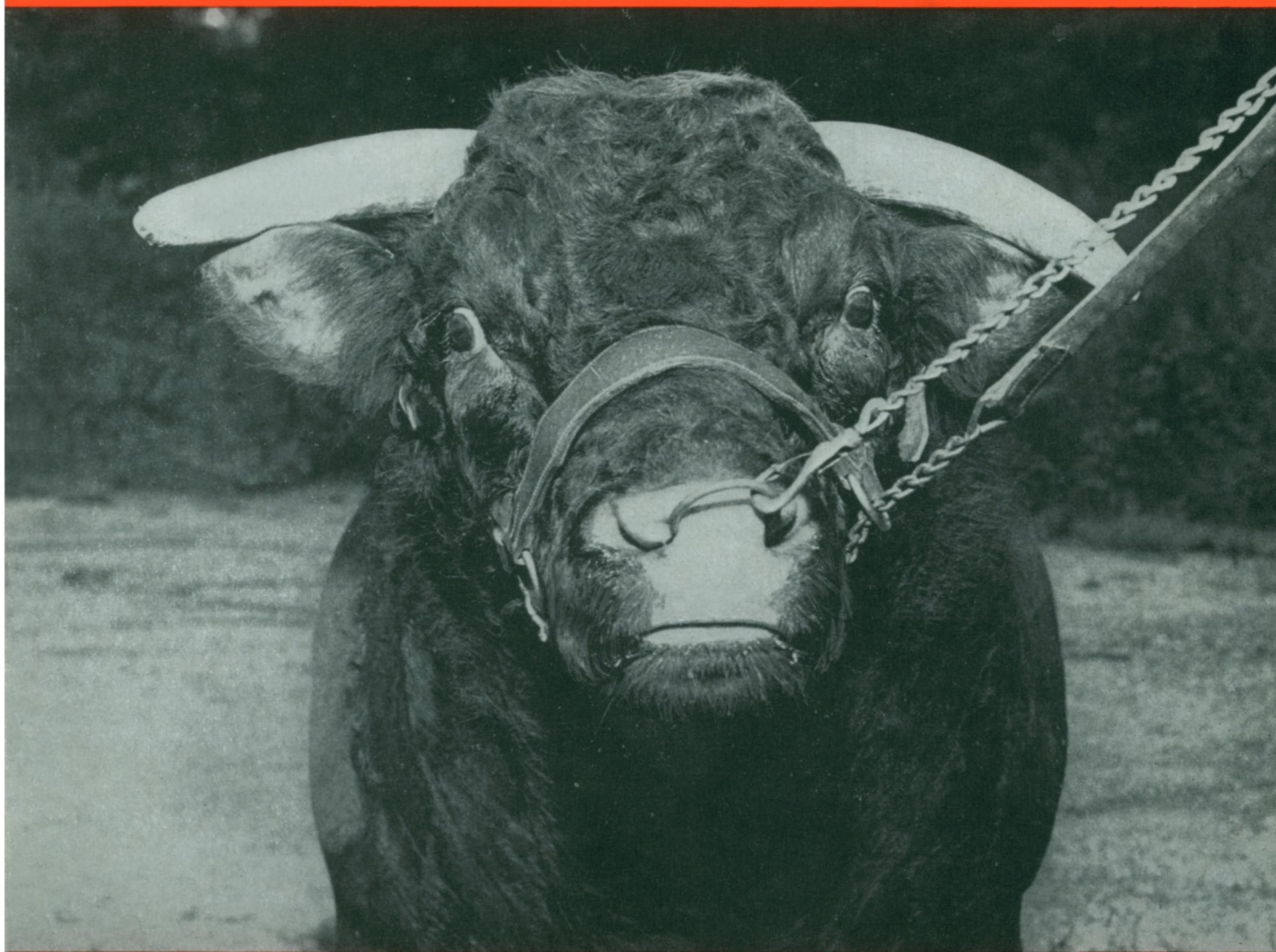
15¢



SCIENCE NEWS LETTER

Vol. 53, No. 3

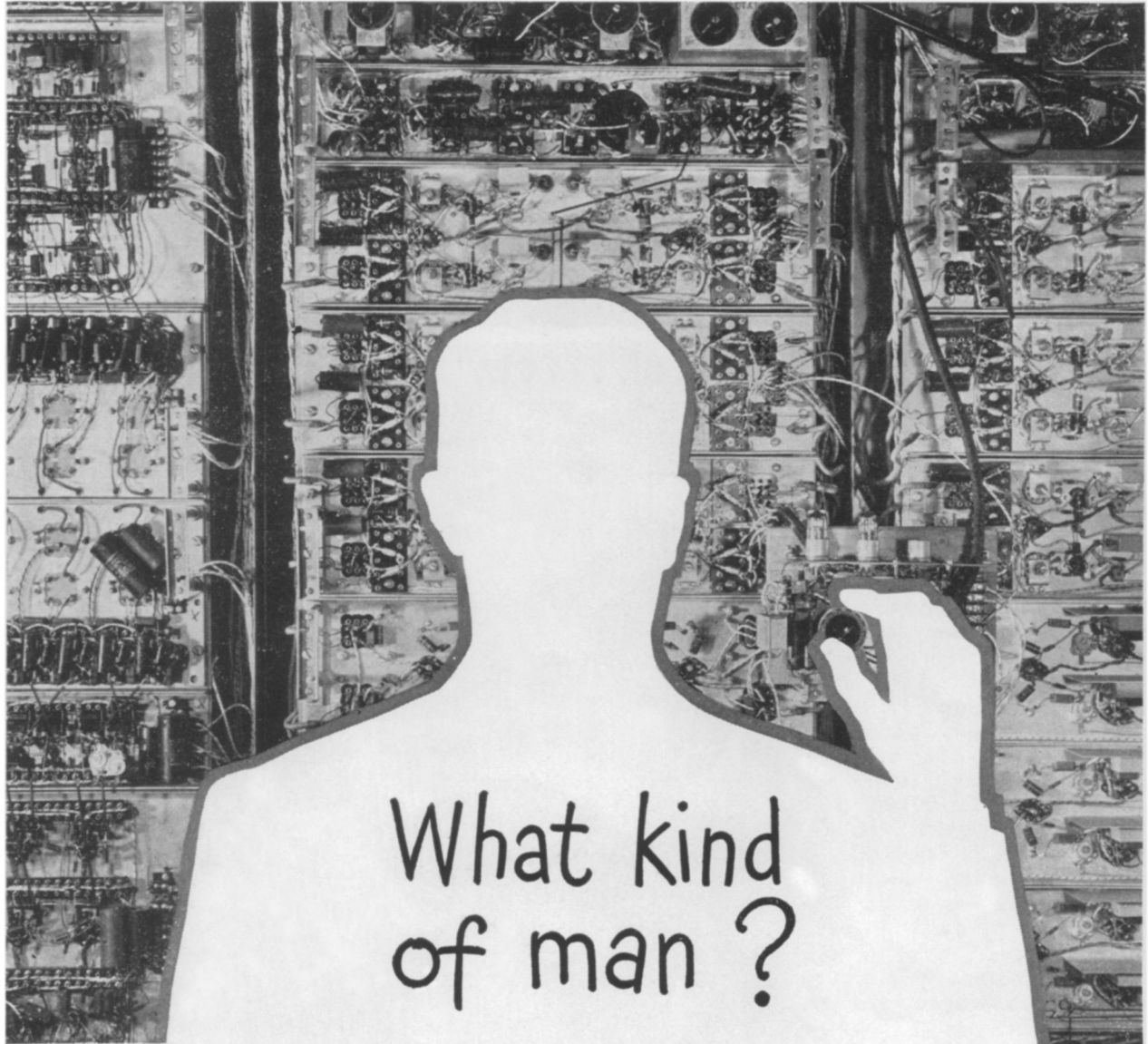
THE WEEKLY SUMMARY OF CURRENT SCIENCE • JAN. 17, 1948



Better Beefsteaks Ahead

See Page 42

A SCIENCE SERVICE PUBLICATION



WHAT KIND of men are the 2,300 scientists and engineers of Bell Telephone Laboratories?

Men of many types, working in different fields of research, may contribute to each development.

But all have certain characteristics in common: Good minds as a foundation, many years of learning in the fundamentals of their science and the methods of research, and a co-operative attitude — for without co-operation of individuals these products of research could never be produced.

Above all else, however, they have “the spirit to adventure, the wit to question, and the wisdom to accept and use.”

That kind of men can produce the finest telephone equipment in the world — and have done so.



BELL TELEPHONE LABORATORIES *EXPLORING AND INVENTING, DEVISING
AND PERFECTING FOR CONTINUED IMPROVEMENTS AND ECONOMIES IN TELEPHONE SERVICE*