

• New Machines and Gadgets •

If you want more information on the new things described here, send a three-cent stamp to SCIENCE NEWS LETTER, 1719 N St., Washington 6, D. C. and ask for Gadget Bulletin 419. To receive this Gadget Bulletin without special request each week, remit \$1.50 for one year's subscription.

⚙️ **MOISTURE METER**, to determine when the lawn or garden has been watered to the desired depth, consists of a post to drive into the soil on which is a movable metal flag. On the bottom of the flag is a probe, adjustable in length, which is pushed into the ground. When the soil is wet down to the end of the probe, it softens and a spring pops the flag to the top of its post.

Science News Letter, June 19, 1948

⚙️ **TABLE MAT**, to protect the surface from hot dishes, is a grille-work of plastic strips standing on their edges. The heat-resistant plastic used is easily cleaned in warm water; the mat is stain-proof and will not warp.

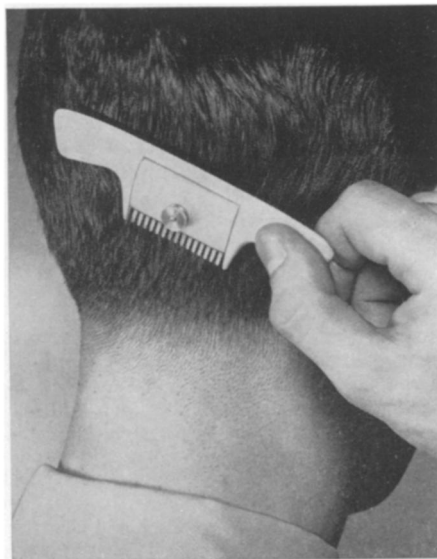
Science News Letter, June 19, 1948

⚙️ **BULLETIN BOARD** is made of thin steel and notices displayed on it are held in place with small magnets instead of the customary pins and tacks. The magnets are a type containing aluminum, nickel and iron, and hold strongly to the steel board even through sheets of paper.

Science News Letter, June 19, 1948

⚙️ **MAIL BAG** is made of a fabric woven of fiber-glass yarn and coated with a vinyl resin. This new-type fire-resistant and waterproof pouch was developed for the Post Office Department and is particularly suitable for airmail.

Science News Letter, June 19, 1948



⚙️ **HAIR-TRIMMER**, shown in the picture, is a two-handed plastic comb with a razor blade attached at its center. The position of the blade is fixed where desired by a sliding thumb nut; any single-edged blade can be used.

Science News Letter, June 19, 1948

⚙️ **TOY FISH** for the youngster has a wiggling tail that propels it through water. The wiggle comes from inside mechanism operated by a spring which is wound up by a tiny crank in the snout of the fish. Water ballast controls buoyancy and permits submerged swimming.

Science News Letter, June 19, 1948

⚙️ **ENVELOPE-ADDRESSING** machine uses only a master tape and colorless fluid, without stencils, plates, ink or ribbons. Addresses are written with an ordinary typewriter on a long paper tape backed by a carbon strip. The tape will reproduce each address about 100 times.

Science News Letter, June 19, 1948

⚙️ **AUTOMATIC ICE** machine produces thousands of ice cubes a day, each with a pencil-sized hole through it. This hole penetrating the center of each prevents the cubes in storage from re-freezing and clumping together. The machine, which operates on household electric current, cuts itself off when its bin is filled with ice cubes and on again when the bin is emptied.

Science News Letter, June 19, 1948

Experimental Kit For Dry Cell Battery

With materials in kit you can make a dry cell at home—zinc can, wrapped bobbin, bottom washer, top collar, sealing compound and label. Factory-assembled dry cell furnished for comparison purposes.

Other apparatus included—tiny flashlight bulb, litmus paper, cardboard washers, tinned copper wire, insulated copper wire, iron rod and iron filings with which you can perform experiments in electricity.

One of the popular Things of Science Kits. Full Instructions. Only 50c postpaid

Question Box

AERONAUTICS

What planes will attempt to beat the record of the XS-1? p. 387.

ENGINEERING

What new method has been found to prevent pipe corrosion? p. 391.

FORESTRY

What role have insects been found to play in elm disease? p. 390.

Photographs: Cover, Prof. J. J. Nassau; p. 387, Army Air Force; p. 389, U. S. Atomic Energy Commission; p. 390, Pennsylvania State College; p. 391, George A. Smith; p. 395, Westinghouse Electric Corp.

NUCLEAR PHYSICS

What advantages will the new electrostatic accelerator have for atomic research? p. 389.

ORNITHOLOGY

What new fact has been revealed about the habits of gulls? p. 388.

PHYSIOLOGY

What role does the brain play in the aging process? p. 398.

PSYCHOLOGY

What determines musical taste? p. 397.

TO SCIENCE SERVICE

1719 N st., N. W.
Washington 6, D. C.

Send me _____

DRY CELL experimental kits, postpaid, at 50c each (3 for \$1).

Remittance enclosed.

Mail to name and address at right.

O. K. _____
Initials