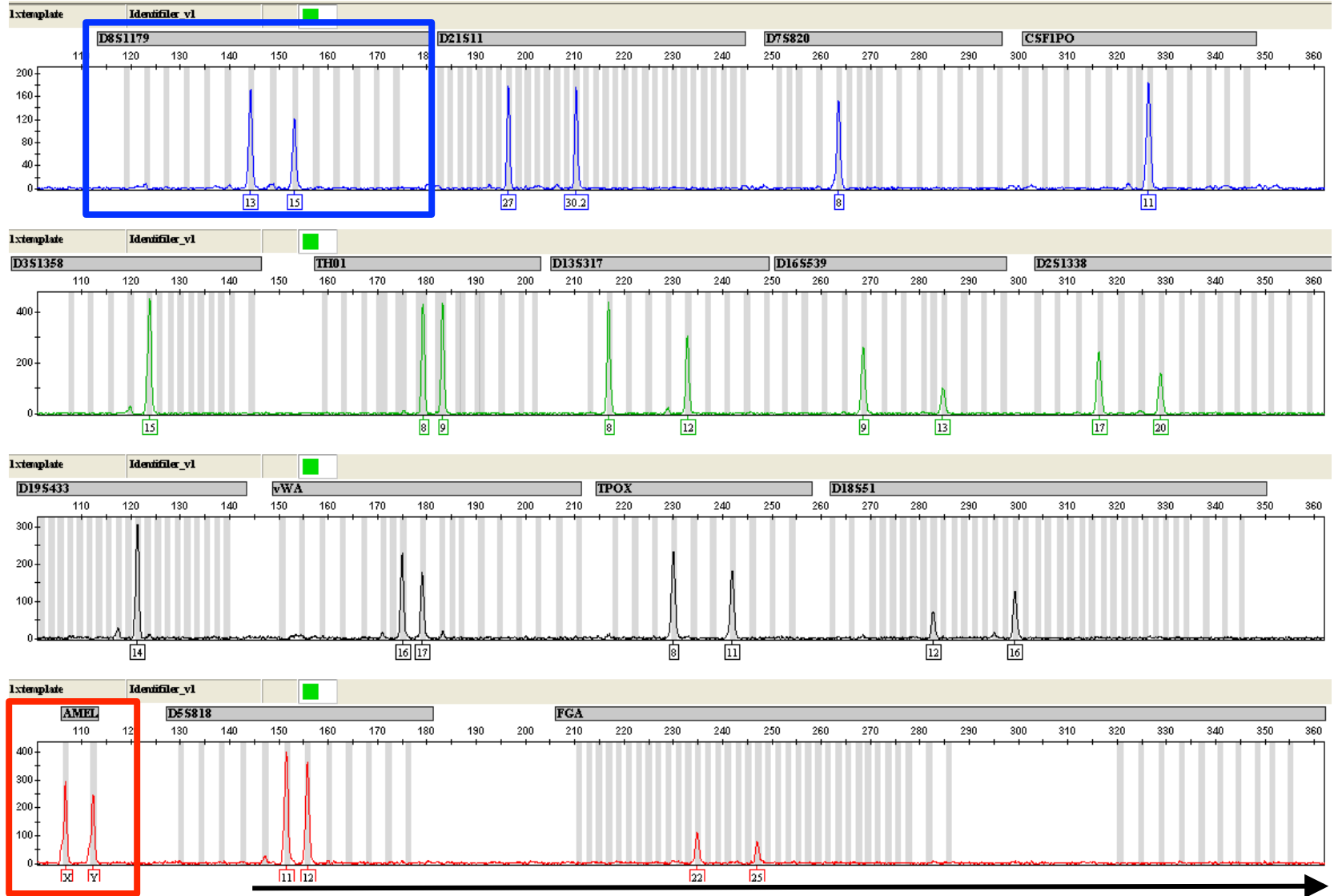


Example Short Tandem Repeat (STR) Analysis of Human DNA

Person has two copies of this STR location
 (one chromosome from each parent)
 One copy has 13 repeats and one has 15 repeats

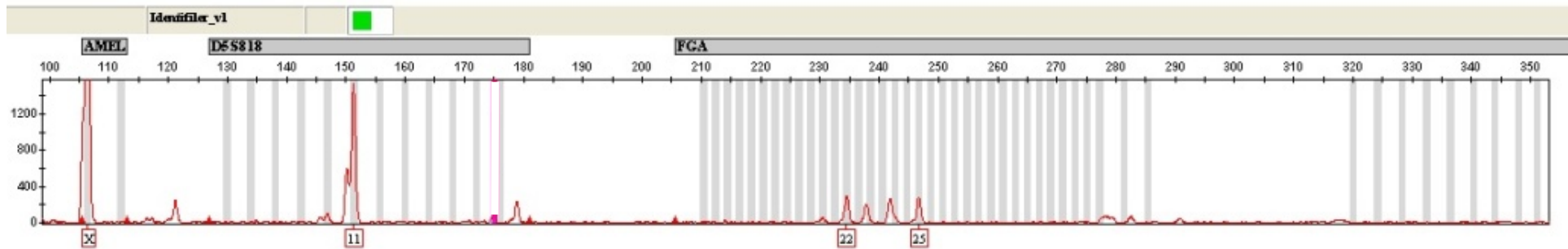
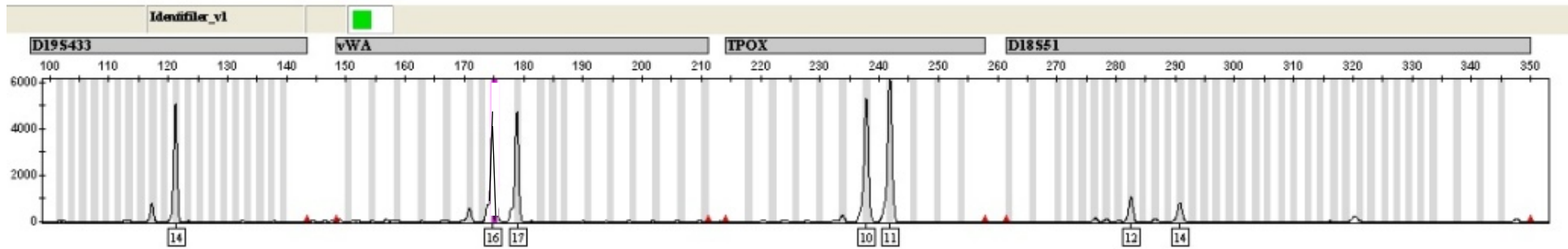
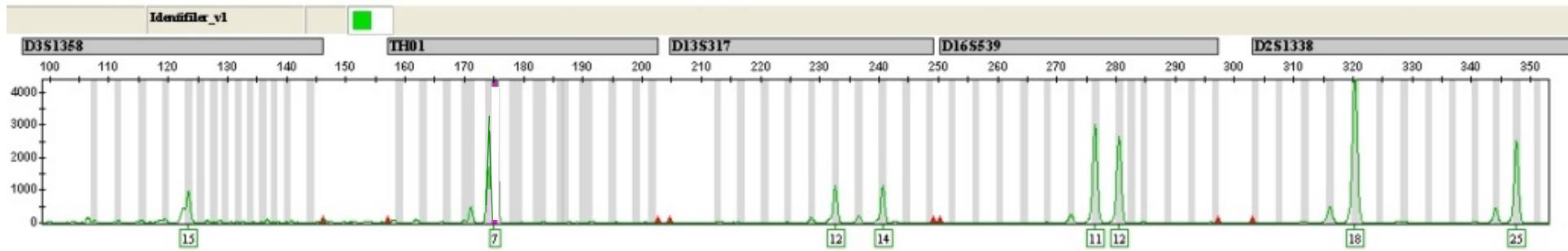
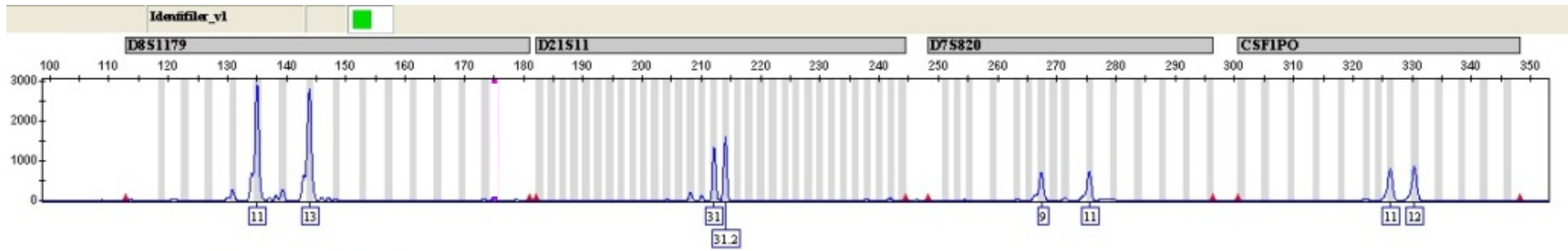
4 different colors of fluorescent molecules attached to copied DNA from different STRs



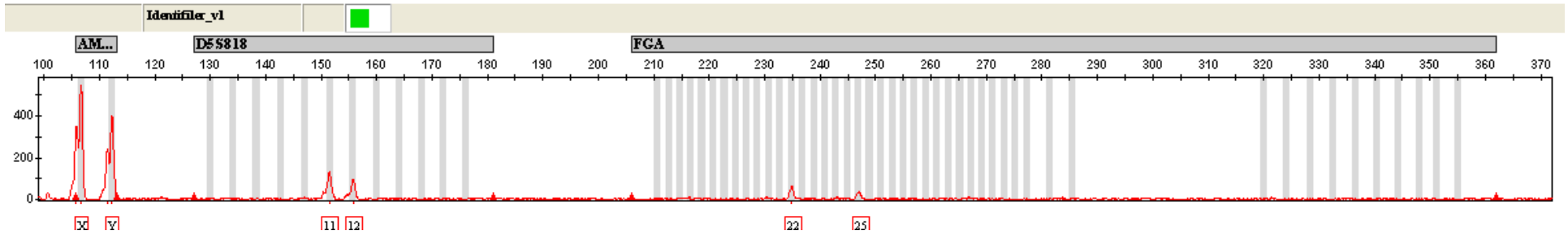
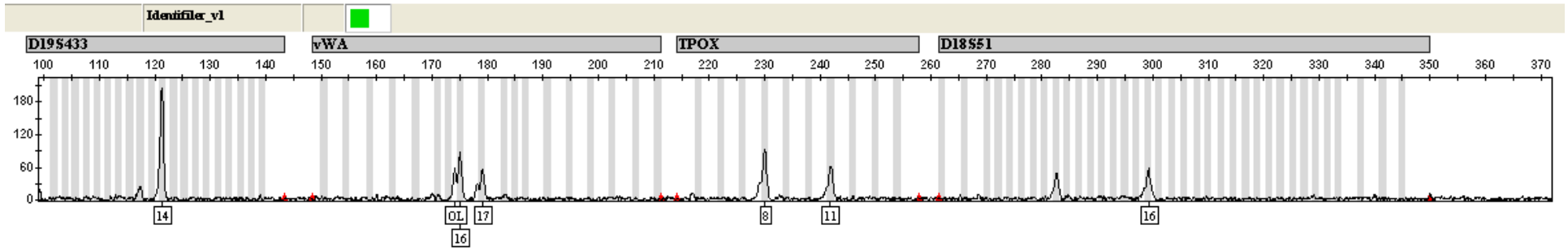
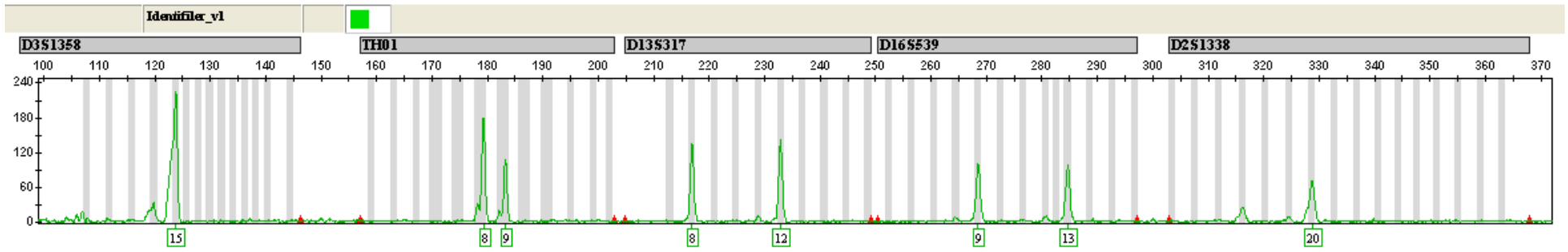
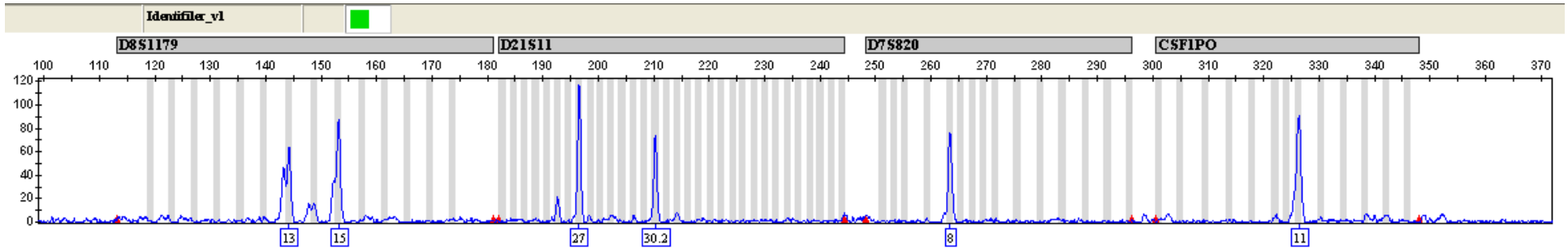
X & Y chromosomes → male
 (only X chromosomes → female)

Size (number of base pairs) of copied DNA

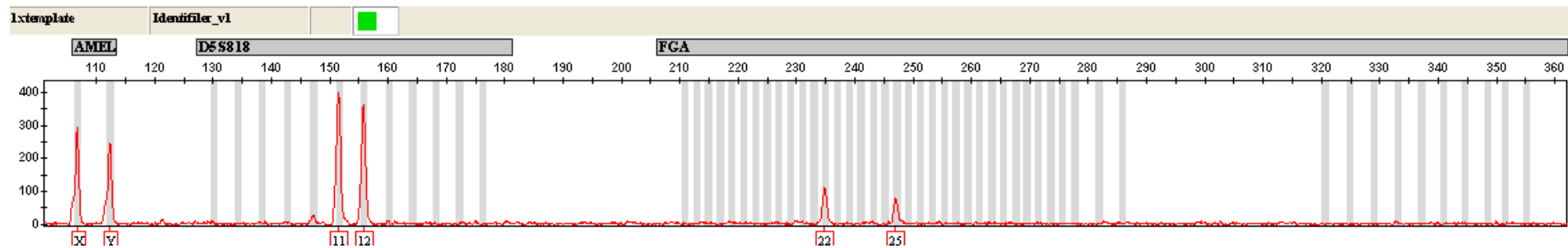
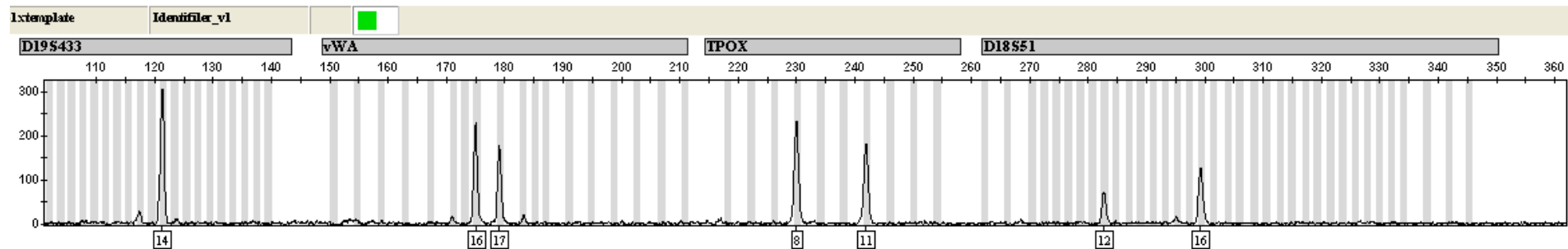
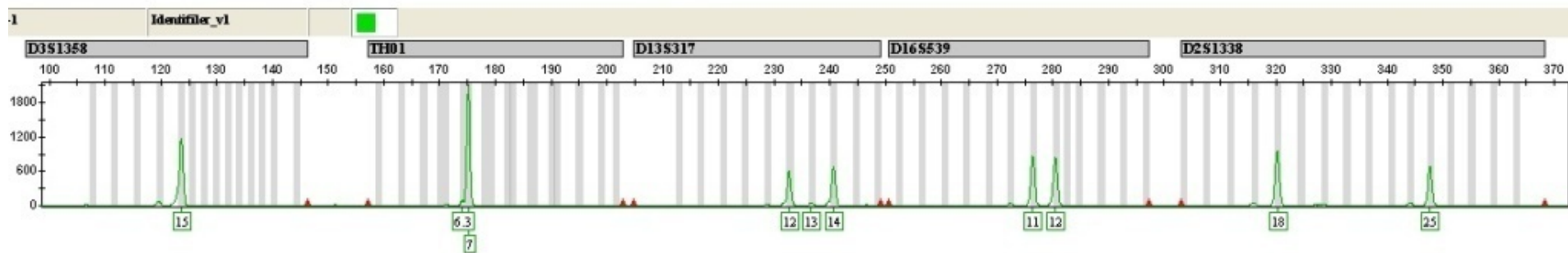
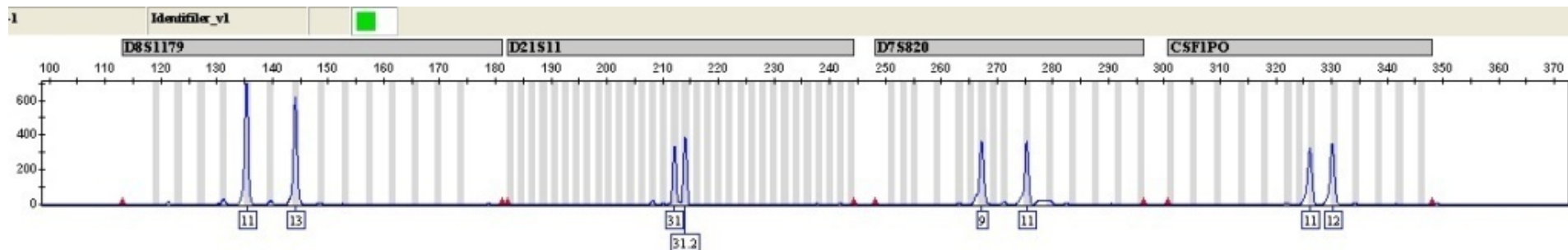
DNA Sample A from Crime Scene



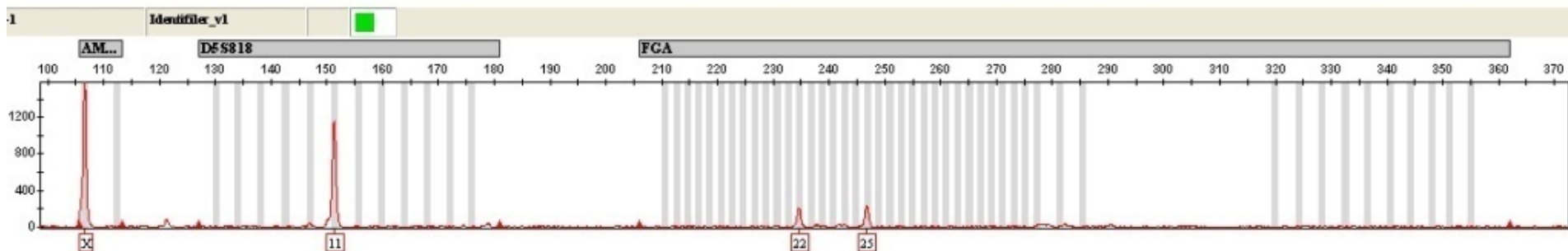
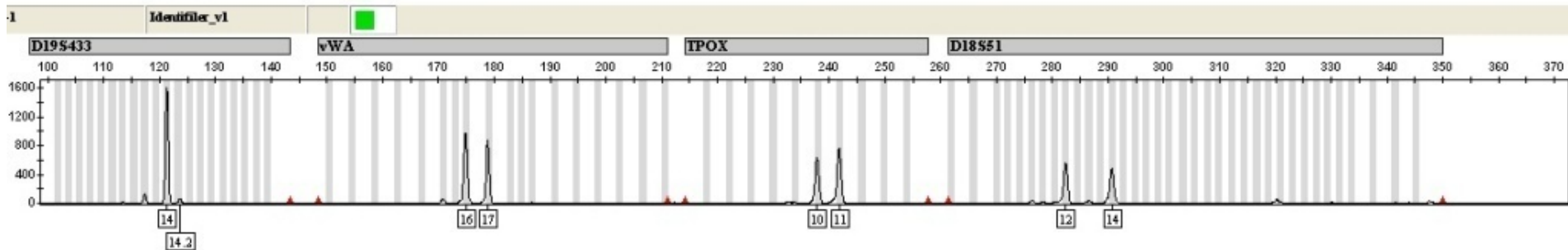
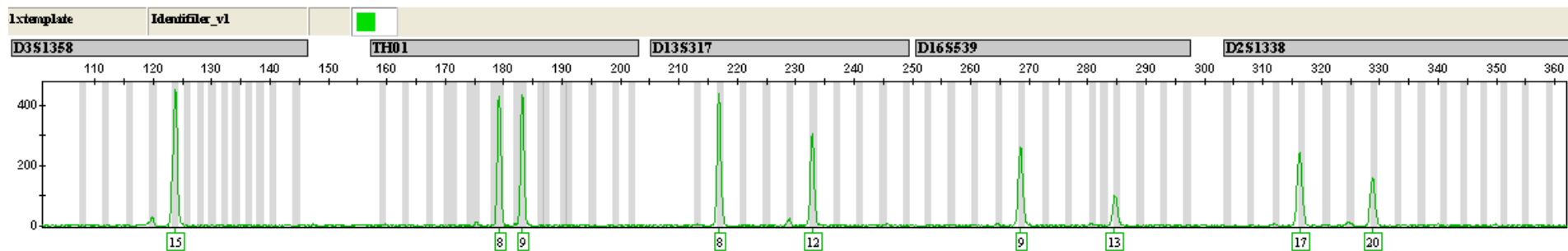
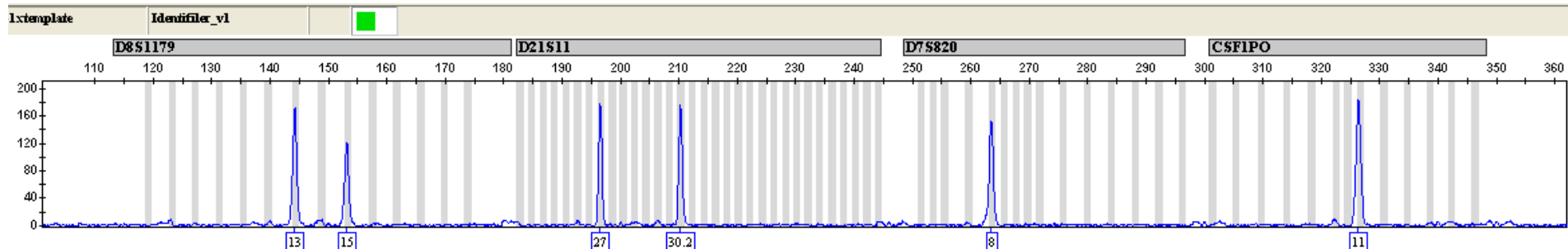
DNA Sample B from Crime Scene



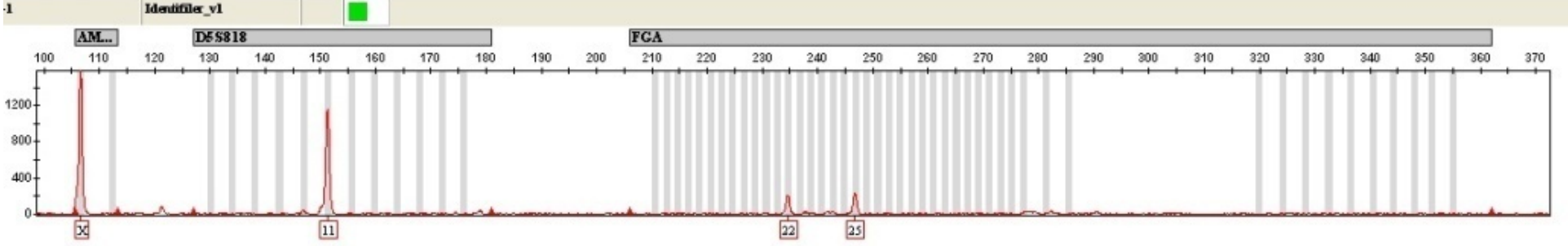
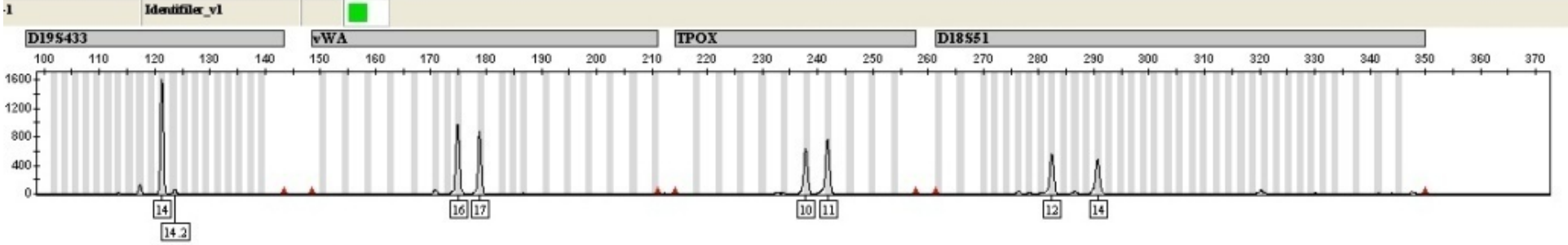
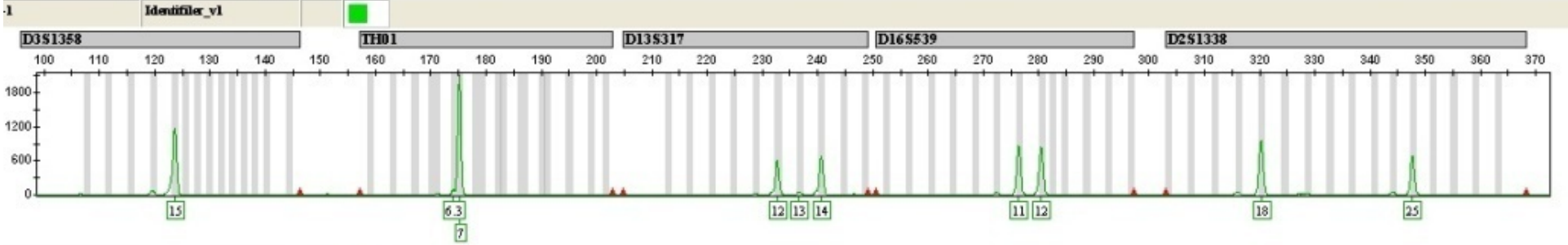
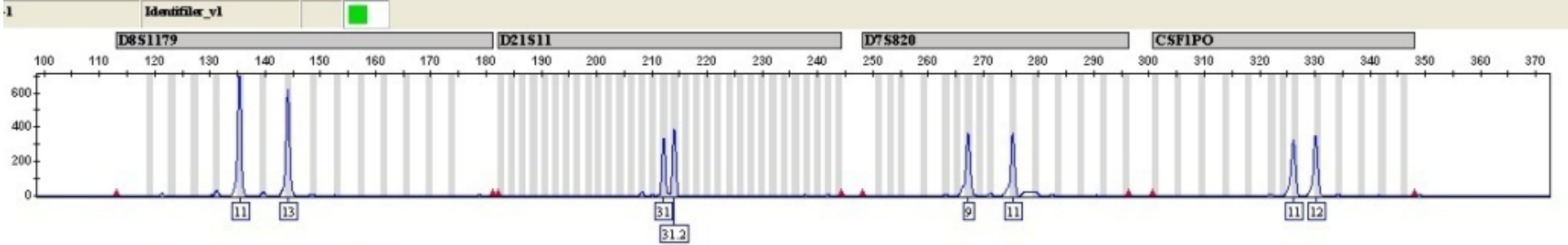
DNA from Suspect 1



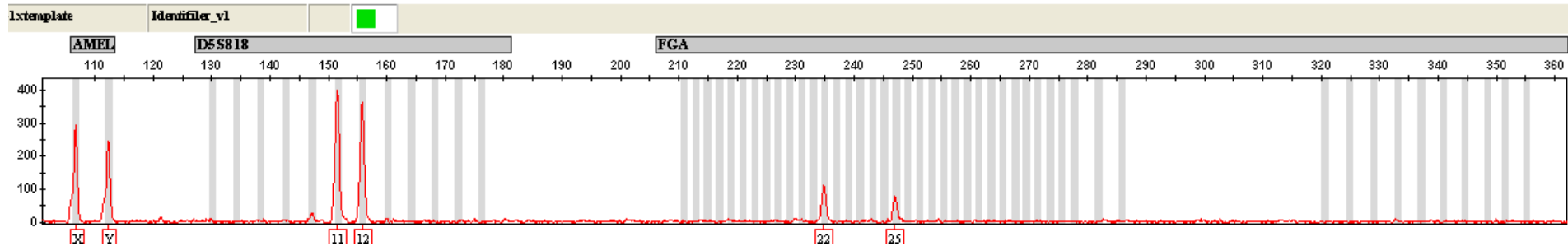
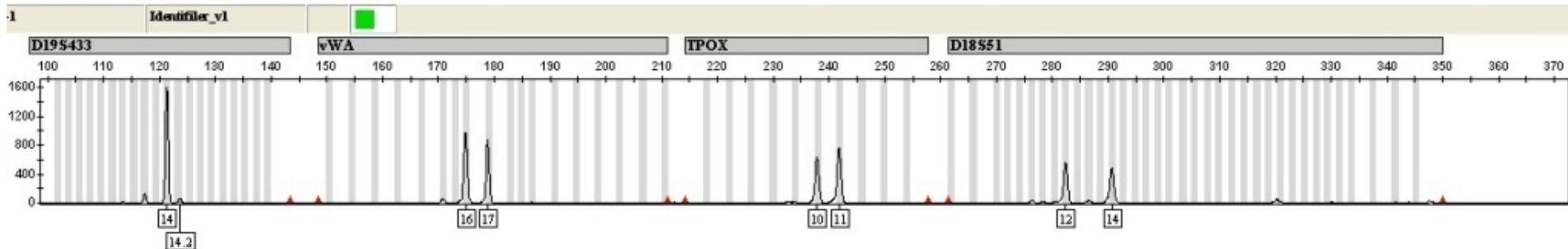
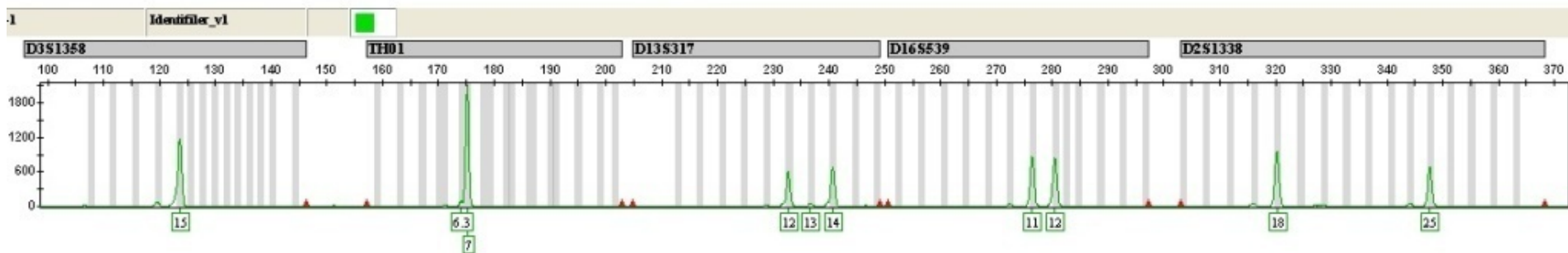
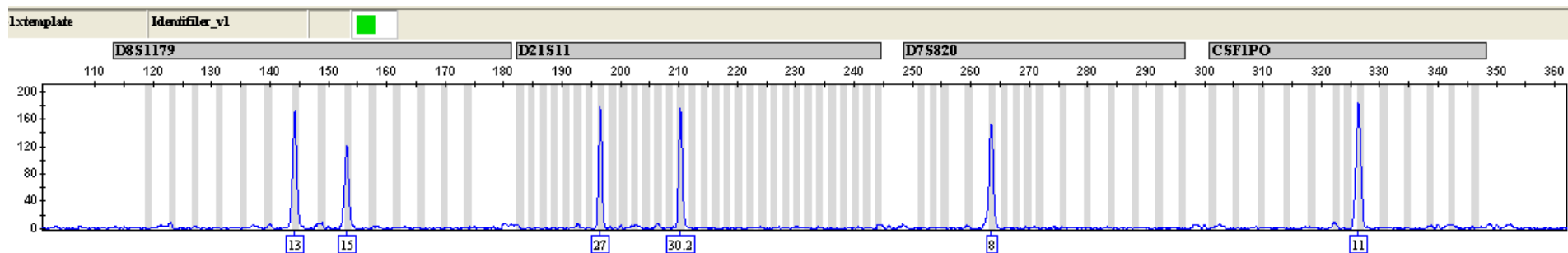
DNA from Suspect 2



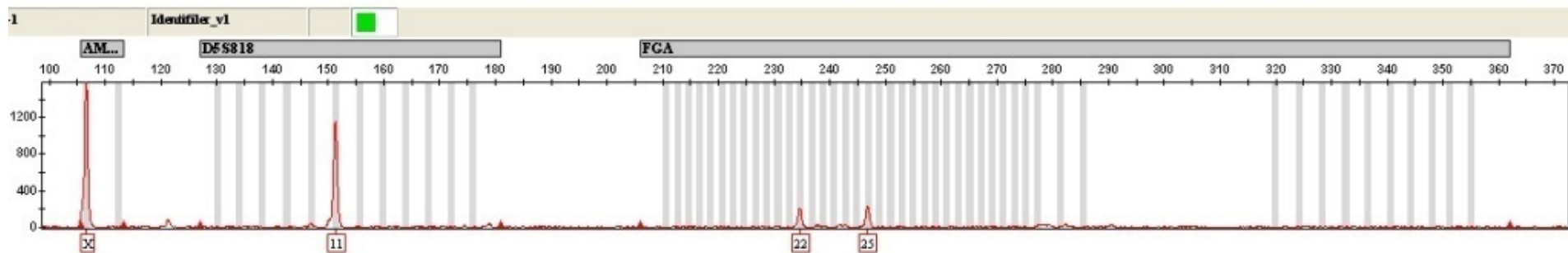
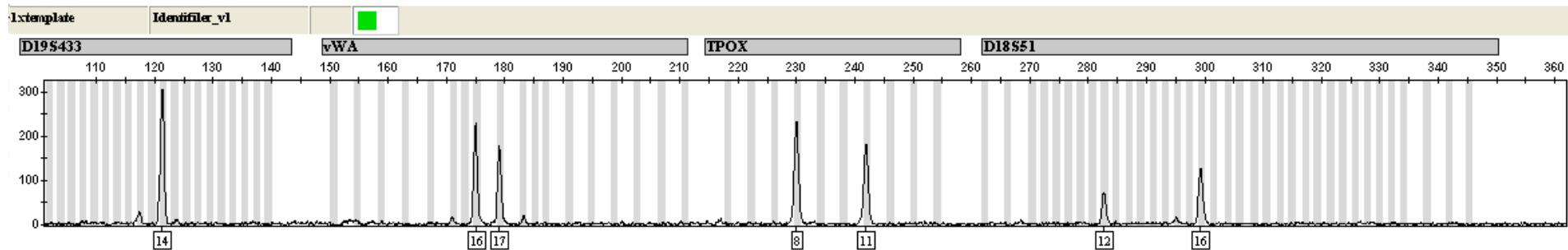
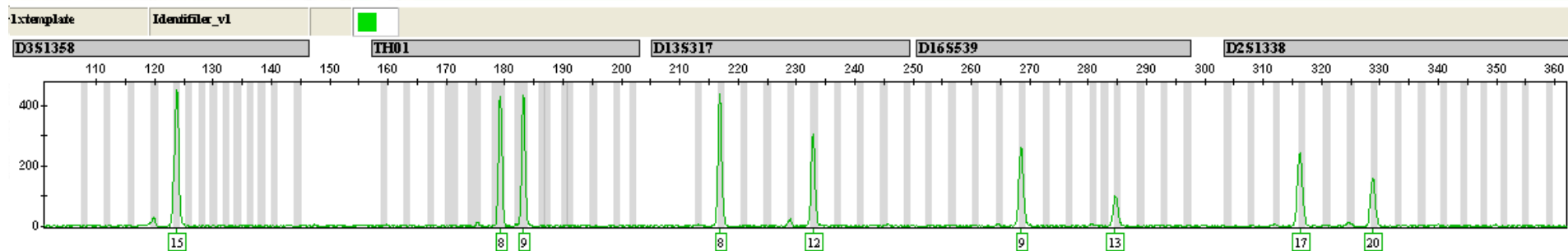
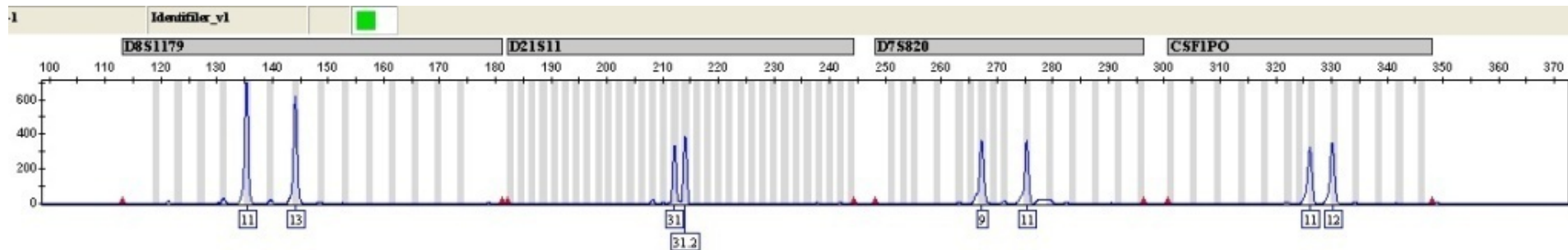
DNA from Suspect 3



DNA from Suspect 4



DNA from Suspect 5



DNA from Suspect 6

